

### VTEM Electromagnetic Survey Contracted to Commence in June 2011

- Geotech Airborne Pty Ltd has been engaged to carry out a state of the art helicopter-borne VTEM electromagnetic geophysical survey at the Company's Citadel Project, which includes the high-grade gold-copper Magnum Deposit.
- VTEM Survey will take less than one week to conclude and is scheduled to commence during the first week of June 2011. Results and initial interpretations expected to be available July 2011.
- VTEM Survey will cover some 350 km<sup>2</sup> which is 20% of the total 1,714 km<sup>2</sup> tenement area of the Citadel Project.
- The VTEM Survey is expected to validate existing exploration targets, provide additional exploration targets and has the capacity to provide further guidance as to the structure and likely extent of the Magnum Deposit.

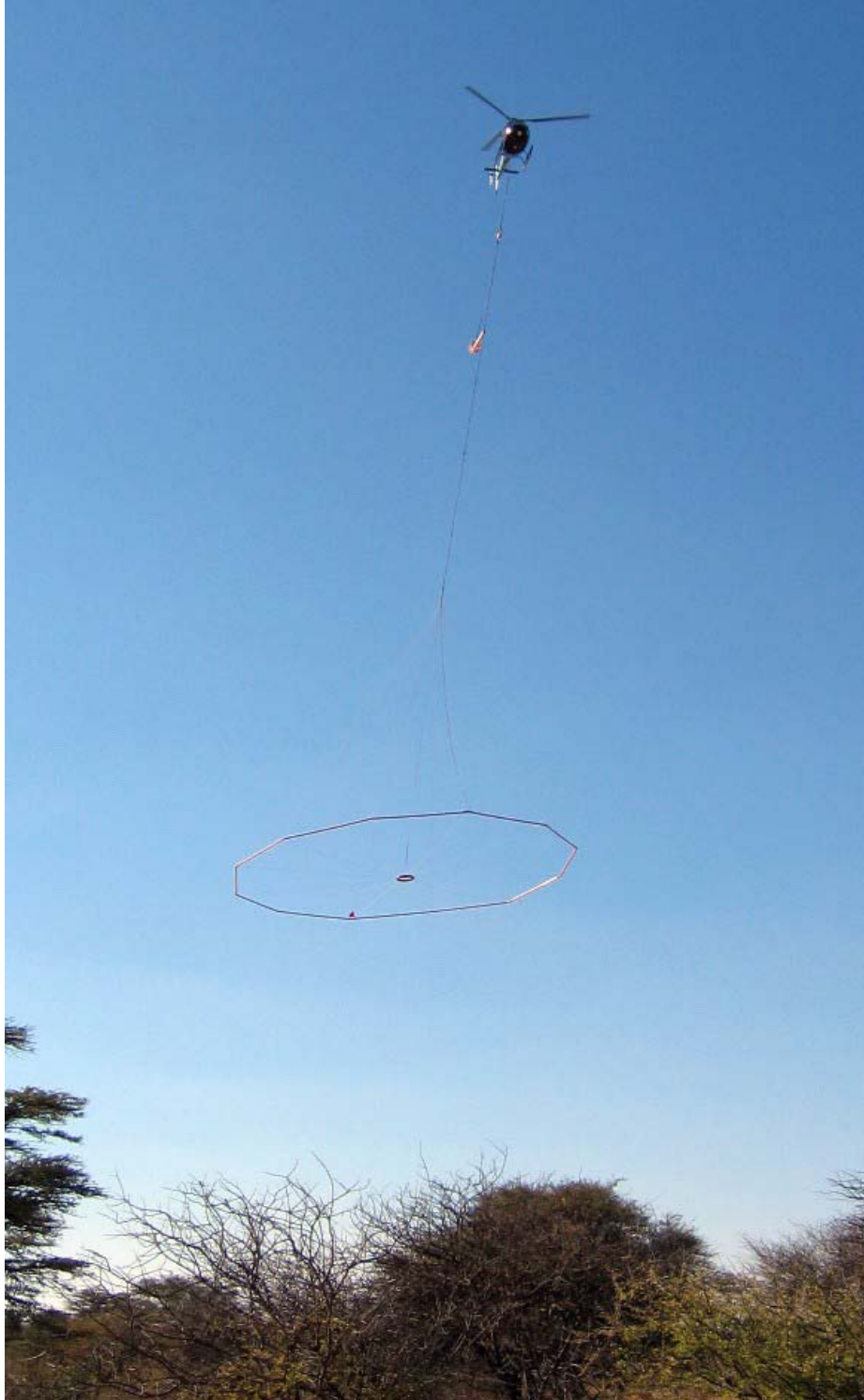
The prospective Proterozoic rocks within Antipa's Citadel Project are concealed beneath 20 to 100 metres of younger cover, providing an excellent opportunity for modern electromagnetic survey techniques to identify and target areas prospective for buried giant Proterozoic gold-copper and copper deposits. Geotech Airborne Pty Ltd will carry out a helicopter-borne VTEM electromagnetic geophysical survey to cover an area of 350 km<sup>2</sup> via 872 line kilometres at flight line spacings (perpendicular to stratigraphy) of between 200 to 800 metres, including detailed VTEM surveying over the Magnum Dome environs. The anticipated minimum depth of penetration of the VTEM Survey is expected to be approximately 400 vertical metres below the surface of the ground.

The only previous electromagnetic survey on the Citadel Project was carried out approximately 17 years ago by BHP utilising 1970's technology with a fixed-wing airborne technique. Notwithstanding the obvious limitations of this technique in comparison to modern technology, the survey played a role in the discovery of the Magnum deposit and Antipa expects that the greater clarity afforded by the VTEM technology will validate existing targets and provide additional exploration targets.

Commenting on the upcoming VTEM Survey, Mr Roger Mason, Antipa's Managing Director, said: "The use of VTEM, the world's highest resolution and most superior signal-to-noise ratio airborne electromagnetic system, is consistent with Antipa's exploration strategy of unlocking the Project's world-class discovery potential by the use of advanced exploration techniques and cutting-edge technology".

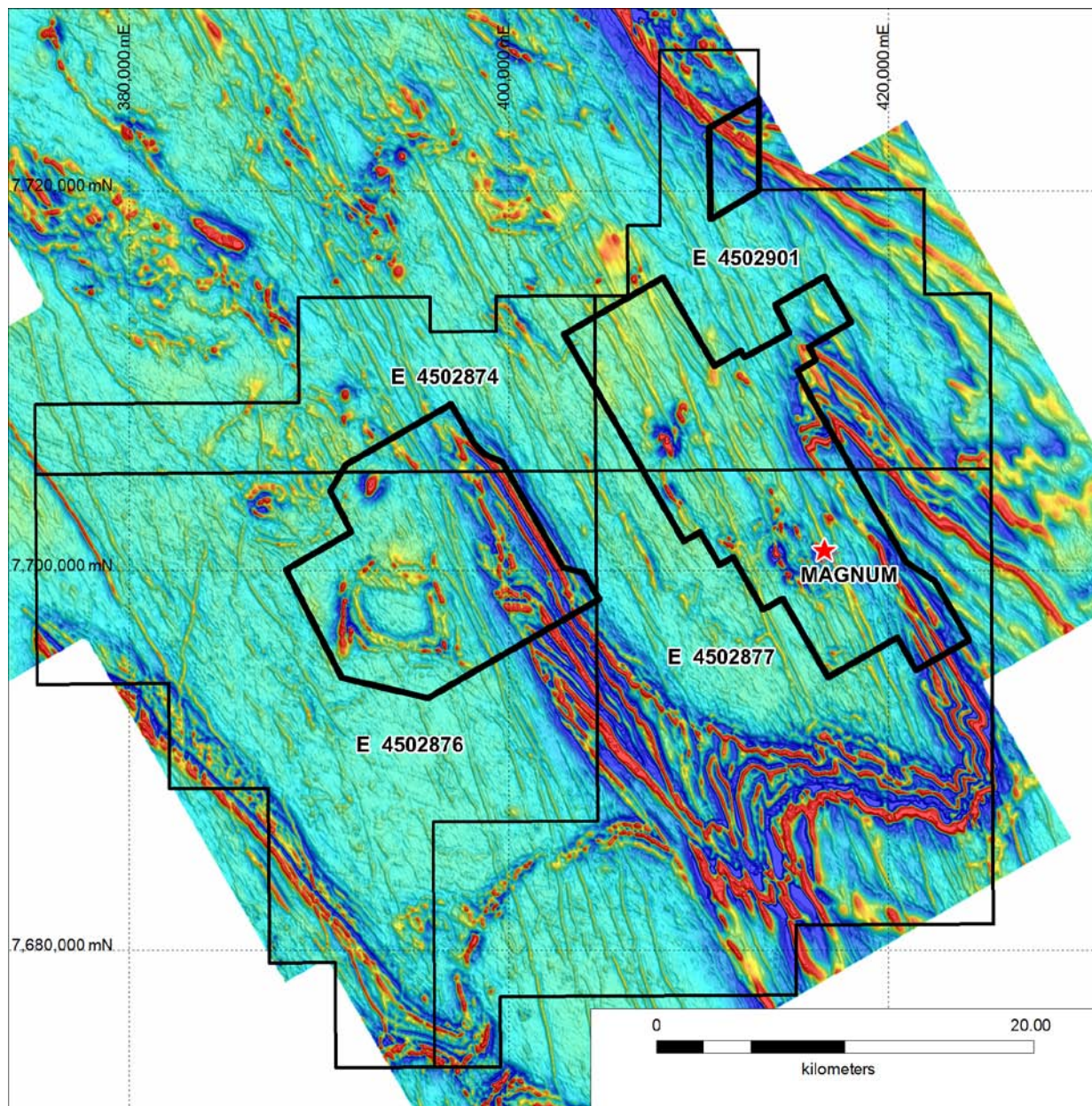
**For further information, please visit [www.antipaminerals.com.au](http://www.antipaminerals.com.au) or contact:**

Roger Mason  
Managing Director  
Antipa Minerals Ltd  
+61 (0)8 6365 4850



**A Geotech Airborne Pty Ltd Heliborne VTEM Survey in progress  
(NB: EM Loop circa 40 metres above ground & travelling at less than 50 km/hr)**





**Aerial Extent of VTEM Survey**  
**(NB: Black polygons outline 350 km<sup>2</sup> VTEM Survey area including 872 line kilometres at flight line spacings of 200 to 800 metres)**

**Competent Persons Statement:** The information in this document that relates to Exploration Results is based on information compiled by Mr Roger Mason who is a full-time employee of the Company and is a member of the Australasian Institute of Mining and Metallurgy. Roger Mason has sufficient experience which is relevant to the style of mineralisation and type of deposit under consideration and to the activity which he is undertaking to qualify as a Competent Person as defined in the 2004 Edition of the 'Australasian Code for Reporting of Exploration Results, Mineral Resources and Ore Reserves'. Roger Mason consents to the inclusion in the document of the matters based on his information in the form and context in which it appears.

## Press Release

Perth, Western Australia: 16 May 2011 (ASX:AZY)

**Forward-Looking Statements:** This document may include forward-looking statements. Forward-looking statements include, but are not limited to, statements concerning Antipa Mineral Ltd's planned exploration program and other statements that are not historical facts. When used in this document, the words such as "could," "plan," "estimate," "expect," "intend," "may," "potential," "should," and similar expressions are forward-looking statements. Although Antipa Minerals Ltd believes that its expectations reflected in these forward-looking statements are reasonable, such statements involve risks and uncertainties and no assurance can be given that actual results will be consistent with these forward-looking statements.

**About Antipa Minerals:** Antipa Minerals Ltd is an Australian public company which was formed with the objective of identifying under-explored mineral projects in mineral provinces which have the potential to host world class mineral deposits, thereby offering high leverage exploration potential. The Company owns a package of prospective tenements in the Proterozoic Paterson Province of Western Australia known as the Citadel Project. The Citadel Project is located approximately 100 kilometres north of Newcrest's Telfer gold mine and includes the drill defined gold and copper deposit known as the Magnum Deposit.