

MEDIA RELEASE
31 May 2018


ANTIPAMINERALS

WA Government Exploration Drilling Grants increase to \$710,000

Antipa Minerals Limited (**Antipa** or the **Company**) is pleased to advise that it has now received EIS funding grants totalling approximately \$710,000 from the Western Australian Government's Exploration Incentive Scheme (**EIS**).

The bulk of these grants, totalling approximately \$600,000, will be used to carry out exploration activities on Antipa's 100% owned Minyari, WACA, Minyari Dome, Tim's Dome and Chicken Ranch deposits. The balance of approximately \$110,000 will be utilised at the Folly Target which forms part of the Company's \$60m Citadel Project farm-in agreement with Rio Tinto Exploration Pty Ltd (**Rio Tinto**).

All of the grants contemplate the completion of Reverse-Circulation drilling, to be 50% EIS co-funded. This means drilling expenditure of \$1.42m will be eligible for a \$710,000 refund under the EIS scheme. It is intended that this drilling will be completed as part of the upcoming 2018 exploration programmes, both on Antipa's 100% owned ground and by Rio Tinto on the Folly Target.

Antipa would like to acknowledge the ongoing support provided by the WA Government through its EIS programme for the Company's exploration programmes. The EIS co-funded drilling programme preferentially funds high quality, technical and economically based projects that promote new exploration concepts and are assessed by a panel on the basis of geoscientific and exploration targeting merit.

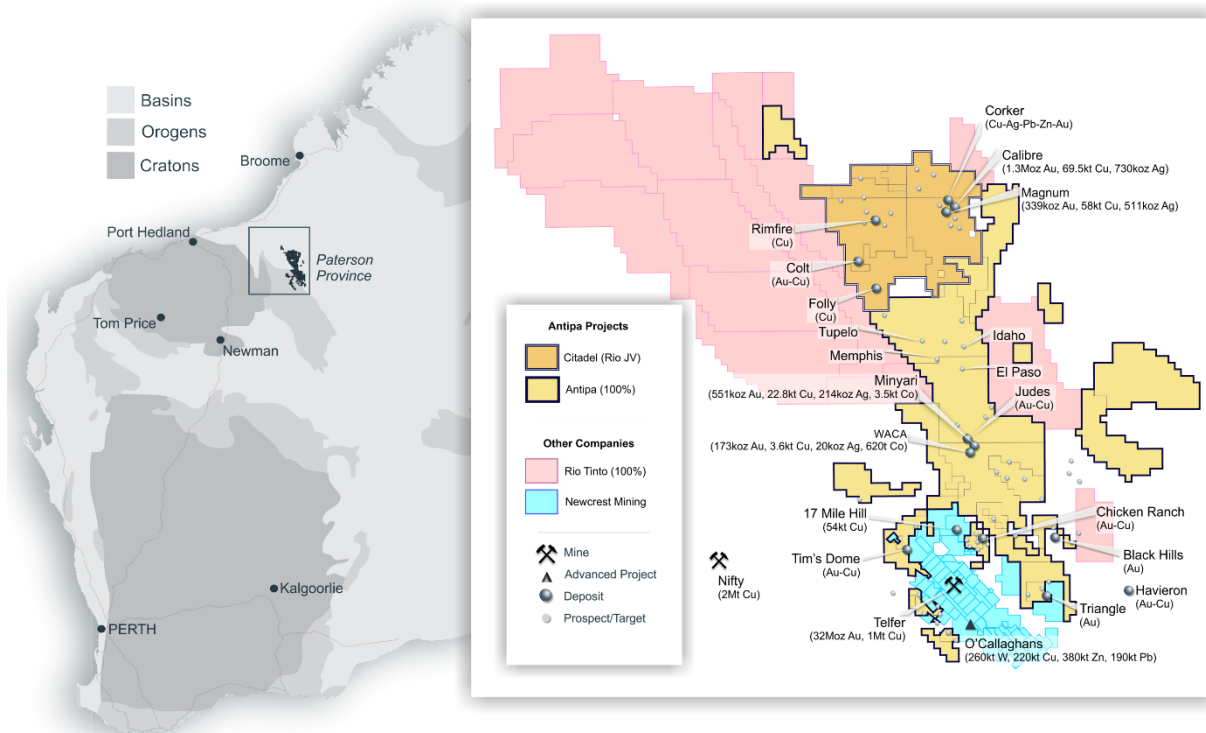
For further information, please visit www.antipaminerals.com.au or contact:

Roger Mason
Managing Director
Antipa Minerals Ltd
+61 (0)8 9481 1103

Stephen Power
Executive Chairman
Antipa Minerals Ltd
+61 (0)8 9481 1103

About Antipa Minerals: Antipa Minerals Ltd is an Australian public company which was formed with the objective of identifying under-explored mineral projects in mineral provinces which have the potential to host world-class mineral deposits, thereby offering high leverage exploration potential. The Company owns 5,800km² of tenements in the Paterson Province of Western Australia, including a 1,335km² package of prospective granted tenements known as the Citadel Project. The Citadel Project is located approximately 75km north of Newcrest's Telfer gold-copper-silver mine and includes the gold-copper-silver-tungsten Mineral Resources at the Calibre and Magnum deposits and high-grade polymetallic Corker deposit. Under the terms of a Farm-in and Joint Venture Agreement with Rio Tinto Exploration Pty Limited ("Rio Tinto"), a wholly owned subsidiary of Rio Tinto Limited, Rio Tinto can fund up to \$60 million of exploration expenditure to earn up to a 75% interest in Antipa's Citadel Project.

The Company has an additional 1,310km² of granted exploration licences, known as the North Telfer Project which hosts the high-grade gold-copper Minyari and WACA Mineral Resources and extends its ground holding in the Paterson Province to within 20km of the Telfer Gold-Copper-Silver Mine and 30km of the O'Callaghans tungsten and base metal deposit. The Company has also acquired, from the Mark Creasy controlled company Kitchener Resources Pty Ltd, additional exploration licences in the Paterson Province which cover 831km² and the Company owns a further 312km² of exploration licences (including both granted tenements and applications), which combined are known as the Paterson Project, which comes to within 3km of the Telfer mine and 5km of the O'Callaghans deposit.



Competent Persons Statement – Mineral Resource Estimations for the Minyari-WACA Deposits, Calibre Deposit and Magnum Deposit: The information in this report that relates to the estimation and reporting of the Minyari-WACA deposits Mineral Resources is extracted from the report entitled “Minyari/WACA Deposits Maiden Mineral Resources” created on 16 November 2017, the Calibre deposit Mineral Resource information is extracted from the report entitled “Calibre Deposit Mineral Resource Update” created on 17 November 2017 and the Magnum deposit Mineral Resource information is extracted from the report entitled “Calibre and Magnum Deposit Mineral Resource JORC 2012 Updates” created on 23 February 2015, all of which are available to view on www.antipaminerals.com.au and www.asx.com.au. The Company confirms that it is not aware of any new information or data that materially affects the information included in the original market announcements. The Company confirms that the form and context in which the Competent Person’s findings are presented have not been materially modified from the original market announcements.

Gold Metal Equivalent Information - Calibre Mineral Resource AuEquiv cut-off grade: Gold Equivalent (AuEquiv) details of material factors and metal equivalent formula are reported in “Calibre Deposit Mineral Resource Update” created on 16 November 2017 which is available to view on www.antipaminerals.com.au and www.asx.com.au.

Gold Metal Equivalent Information - Magnum Mineral Resource AuEquiv cut-off grade: Gold Equivalent (AuEquiv) details of material factors and metal equivalent formula are reported in “Citadel Project - Calibre and Magnum Deposit Mineral Resource JORC 2012 Updates” created on 23 February 2015 which is available to view on www.antipaminerals.com.au and www.asx.com.au.

Forward-Looking Statements: This document may include forward-looking statements. Forward-looking statements include, but are not limited to, statements concerning Antipa Mineral Ltd’s planned exploration programme and other statements that are not historical facts. When used in this document, the words such as "could," "plan," "estimate," "expect," "intend," "may," "potential," "should," and similar expressions are forward-looking statements. Although Antipa Minerals Ltd believes that its expectations reflected in these forward-looking statements are reasonable, such statements involve risks and uncertainties and no assurance can be given that actual results will be consistent with these forward-looking statements.