

## RESULTS OF GENERAL MEETING OF SHAREHOLDERS

Antipa Minerals Limited (ASX:AZY) (**Company**) advises that a General Meeting of the Company's Shareholders was held today, 4 July 2018. All resolutions put to the meeting were approved by show of hands. In accordance with Listing Rule 3.13.2 and section 251AA of the Corporations Act, the Company advises details of the resolutions put, and the proxies received in respect of each resolution, as set out below:

Resolutions		For	Against	At Proxy Holders Discretion	Abstain/ Excluded
1	Ratification of prior issue of Placement Shares under Listing Rule 7.1	152,918,952	10,792,167	9,165,846	77,759,238
2	Ratification of prior issue of Placement Shares under Listing Rule 7.1A	152,918,952	10,792,167	9,165,846	77,759,238
3	Authorise issue of Shares to Sprott	222,621,689	18,534,085	9,165,846	314,583
4	Ratification of prior issue of Options to Nominees of Joint Lead Managers	229,443,905	11,741,869	9,165,846	284,583
5	Ratification of prior issue of Options to Bacchus Capital	228,870,988	12,314,786	9,165,846	284,583

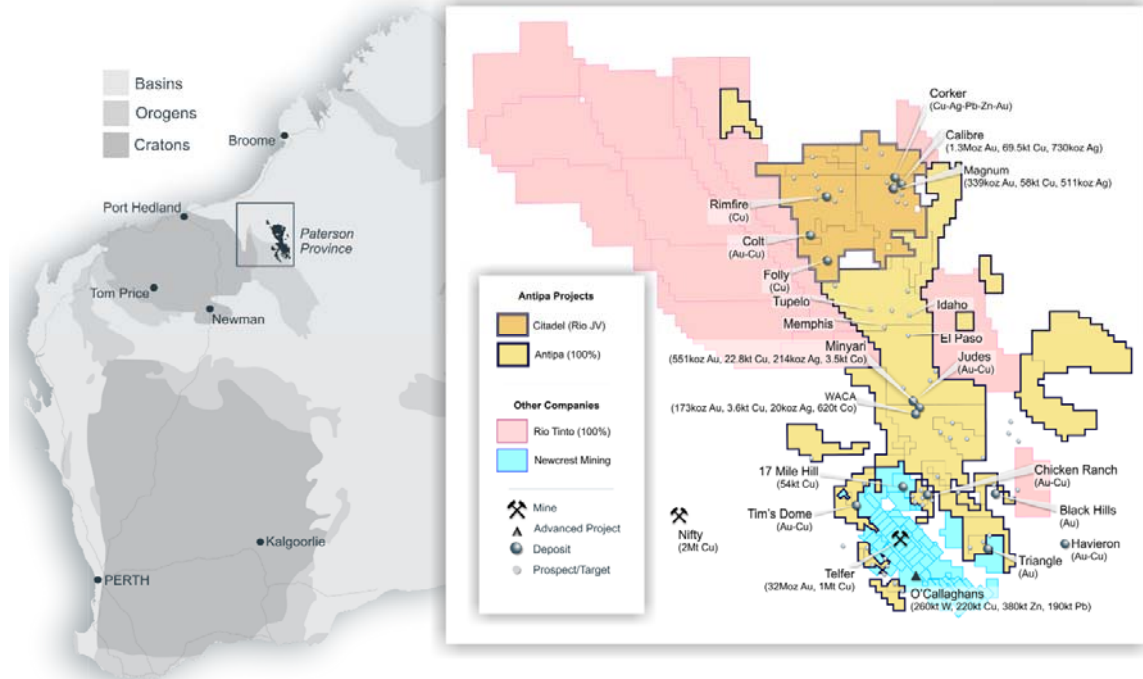
For further information, please visit [www.antipaminerals.com.au](http://www.antipaminerals.com.au) or contact:

Roger Mason  
Managing Director  
Antipa Minerals Ltd  
+61 (0)8 9481 1103

Stephen Power  
Executive Chairman  
Antipa Minerals Ltd  
+61 (0)8 9481 1103

**About Antipa Minerals:** Antipa Minerals Ltd is an Australian public company which was formed with the objective of identifying under-explored mineral projects in mineral provinces which have the potential to host world-class mineral deposits, thereby offering high leverage exploration potential. The Company owns 5,800km<sup>2</sup> of tenements in the Paterson Province of Western Australia, including a 1,335km<sup>2</sup> package of prospective granted tenements known as the Citadel Project. The Citadel Project is located approximately 75km north of Newcrest's Telfer gold-copper-silver mine and includes the gold-copper-silver-tungsten Mineral Resources at the Calibre and Magnum deposits and high-grade polymetallic Corker deposit. Under the terms of a Farm-in and Joint Venture Agreement with Rio Tinto Exploration Pty Limited ("Rio Tinto"), a wholly owned subsidiary of Rio Tinto Limited, Rio Tinto can fund up to \$60 million of exploration expenditure to earn up to a 75% interest in Antipa's Citadel Project.

The Company has an additional 1,310km<sup>2</sup> of granted exploration licences, known as the North Telfer Project which hosts the high-grade gold-copper Minyari and WACA Mineral Resources and extends its ground holding in the Paterson Province to within 20km of the Telfer Gold-Copper-Silver Mine and 30km of the O'Callaghans tungsten and base metal deposit. The Company has also acquired, from the Mark Creasy controlled company Kitchener Resources Pty Ltd, additional exploration licences in the Paterson Province which cover 831km<sup>2</sup> and the Company owns a further 312km<sup>2</sup> of exploration licences (including both granted tenements and applications), which combined are known as the Paterson Project, which comes to within 3km of the Telfer mine and 5km of the O'Callaghans deposit.



**Competent Persons Statement – Mineral Resource Estimations for the Minyari-WACA Deposits, Calibre Deposit and Magnum Deposit:** The information in this report that relates to the estimation and reporting of the Minyari-WACA deposits Mineral Resources is extracted from the report entitled “Minyari/WACA Deposits Maiden Mineral Resources” created on 16 November 2017, the Calibre deposit Mineral Resource information is extracted from the report entitled “Calibre Deposit Mineral Resource Update” created on 17 November 2017 and the Magnum deposit Mineral Resource information is extracted from the report entitled “Calibre and Magnum Deposit Mineral Resource JORC 2012 Updates” created on 23 February 2015, all of which are available to view on [www.antipaminerals.com.au](http://www.antipaminerals.com.au) and [www.asx.com.au](http://www.asx.com.au). The Company confirms that it is not aware of any new information or data that materially affects the information included in the original market announcements. The Company confirms that the form and context in which the Competent Person’s findings are presented have not been materially modified from the original market announcements.

**Gold Metal Equivalent Information - Calibre Mineral Resource AuEquiv cut-off grade:** Gold Equivalent (AuEquiv) details of material factors and metal equivalent formula are reported in “Calibre Deposit Mineral Resource Update” created on 16 November 2017 which is available to view on [www.antipaminerals.com.au](http://www.antipaminerals.com.au) and [www.asx.com.au](http://www.asx.com.au).

**Gold Metal Equivalent Information - Magnum Mineral Resource AuEquiv cut-off grade:** Gold Equivalent (AuEquiv) details of material factors and metal equivalent formula are reported in “Citadel Project - Calibre and Magnum Deposit Mineral Resource JORC 2012 Updates” created on 23 February 2015 which is available to view on [www.antipaminerals.com.au](http://www.antipaminerals.com.au) and [www.asx.com.au](http://www.asx.com.au).

**Forward-Looking Statements:** This document may include forward-looking statements. Forward-looking statements include, but are not limited to, statements concerning Antipa Mineral Ltd’s planned exploration programme and other statements that are not historical facts. When used in this document, the words such as “could,” “plan,” “estimate,” “expect,” “intend,” “may,” “potential,” “should,” and similar expressions are forward-looking statements. Although Antipa Minerals Ltd believes that its expectations reflected in these forward-looking statements are reasonable, such statements involve risks and uncertainties and no assurance can be given that actual results will be consistent with these forward-looking statements.