



## Realising Potential in the Paterson Province

ASX Code : **AZY**

[www.antipaminerals.com.au](http://www.antipaminerals.com.au)



DIGGERS & DEALERS  
MINING FORUM

6th to 8th AUGUST **2018**

Kalgoorlie, Western Australia

# **IMPORTANT NOTICE / DISCLAIMER**

**Nature of this document:** The purpose of this document is to provide general information about Antipa Minerals Limited (the 'Company'). Unless otherwise stated herein, the information in this document is based on the Company's own information and estimates. In viewing this document you agree to be bound by the following terms and conditions.

**Not an offer:** This document is for information purposes only and does not constitute or form any part of any offer or invitation to sell or issue, or any solicitation of any offer to purchase or subscribe for, any securities in the Company in any jurisdiction, including the United States. This document and its contents must not be distributed, transmitted or viewed by any person in any jurisdiction where the distribution, transmission or viewing of this document would be unlawful under the securities or other laws of that or any other jurisdiction. In particular, this document is not for release to US newswire services or distribution in the United States. This document is not considered a recommendation by the Company or any of its affiliates, directors or officers that any recipient invest in the Company nor does it constitute investment, accounting, financial, legal or tax advice.

**Not financial product advice:** This document does not take into account the individual investment objectives, financial situation and particular needs of each of the Company's Shareholders. You may wish to seek independent financial and taxation advice before making any decision in respect of this document. Neither the Company nor any of its related bodies corporate is licensed to provide financial product advice in respect of the Company's securities or any other financial products.

**Forward-looking statements:** This document may include forward-looking statements. Forward-looking statements include, but are not limited to, statements concerning the Company's planned exploration programme and other statements that are not historical facts. When used in this document, the words such as "could," "plan," "estimate," "expect," "intend," "may," "potential," "should," and similar expressions are forward-looking statements. Although the Company believes that its expectations reflected in these forward-looking statements are reasonable, such statements involve risks and uncertainties and no assurance can be given that actual results will be consistent with these forward-looking statements.

**Disclaimer:** No representation or warranty, express or implied, is made by the Company that the material contained in this document will be achieved or prove to be correct. Except for statutory liability which cannot be excluded, each of the Company, its directors, officers, employees, advisers and agents expressly disclaims any responsibility for the accuracy, fairness, sufficiency or completeness of the material contained in this document, or any opinions or beliefs contained in this document, and excludes all liability whatsoever (including in negligence) for any loss or damage which may be suffered by any person as a consequence of any information in this document or any error or omission there from. The Company is under no obligation to update or keep current the information contained in this document or to correct any inaccuracy or omission which may become apparent, or to furnish any person with any further information, unless required to do so by law. Any opinions expressed in the document are subject to change without notice. Recipients of this document should make their own, independent investigation and assessment of the Company its business, assets and liabilities, prospects and profits and losses, as well as the matters covered in this document. Independent expert advice should be sought before any decision based on an assessment of the Company is made.

**Unverified information:** This document may contain information (including information derived from publicly available sources) that has not been independently verified by the Company.

**Cautionary note regarding reserves and resources:** You should be aware that as an Australian company with securities listed on the ASX, the Company is required to report reserves and resources in accordance with the Australasian Code for Reporting of Exploration Results, Mineral Resources and Ore Reserves (JORC Code, 2012 Edition). You should note that while the Company's reserve and resource estimates comply with the JORC Code, they may not comply with the relevant guidelines in other countries and, in particular, do not comply with Industry Guide 7, which governs disclosures of mineral reserves in registration statements filed with the US Securities and Exchange Commission. Information contained in this presentation describing the Company's mineral deposits may not be comparable to similar information made public by companies subject to the reporting and disclosure requirements of US securities laws. In particular, Industry Guide 7 does not recognise classifications other than proven and probable reserves and, as a result, the SEC generally does not permit mining companies to disclose their mineral resources in SEC filings. You should not assume that quantities reported as "resources" will be converted to reserves under the JORC Code or any other reporting regime or that the Company will be able to legally and economically extract them.

**Competent Persons Statement – Exploration Results:** Please refer to the detailed statement at the end of this document.

**Competent Persons Statement – Mineral Resource Estimations for the Minyari-WACA Deposits, Calibre Deposit and Magnum Deposit:** Please refer to detailed statement at end of this document.



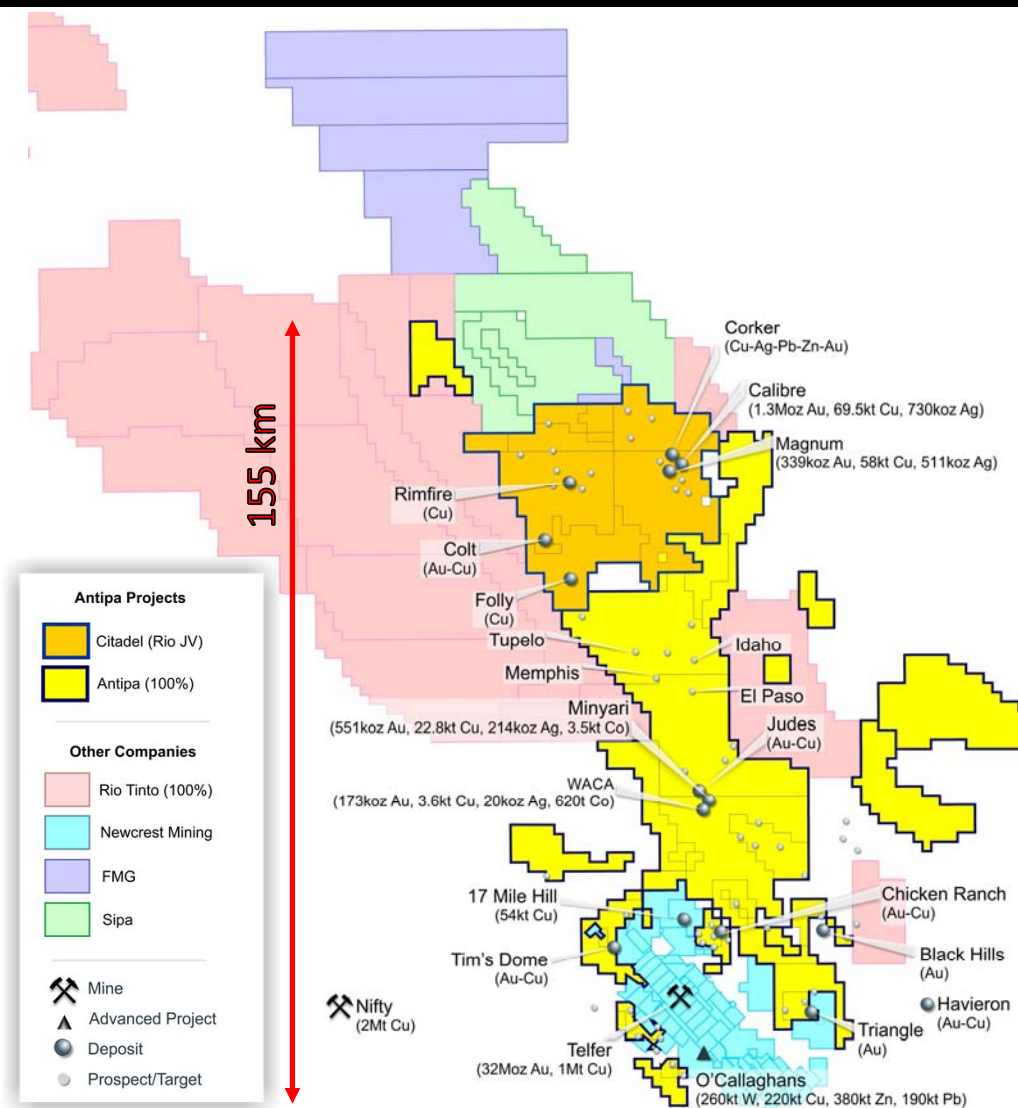
## Large Scale World Class Assets

- Three Large Projects – Citadel, North Telfer and Paterson
- +5,800 km<sup>2</sup> tenement holding in the underexplored but demonstrated World Class Paterson Province in Western Australia extending to within 3km of the Telfer Gold Mine



# COMPELLING INVESTMENT PROPOSITION

- Under-explored Tier 1 province
- Minyari Dome: 100% owned, shallow, high-grade gold, copper, cobalt resource with significant exploration upside:
  - Indicated and Inferred Mineral Resources of 11 Mt for:
    - 723,000 oz gold @ 2.0 g/t
    - 26,000 t copper @ 0.24%
    - 4,000 t cobalt @ 380 ppm
- \$60M Rio Tinto farm-in on Citadel Project to earn 75% interest
- 2018 100% owned Minyari Dome drilling programme underway. Objectives:
  - Expand existing resource to support a Scoping Study in 2019
  - Test new Telfer style high grade gold targets at Tim's Dome
  - Evaluate El Paso Corridor greenfields targets
- Citadel Project Rio Tinto/Antipa farm-in resource:
  - 1.64 Moz gold at 0.8 g/t and 0.20% copper on Citadel Project Joint Venture with Rio Tinto<sup>1</sup>



<sup>1</sup> Note: All references to 'Rio Tinto' in this document are to Rio Tinto Exploration Pty Ltd, a wholly owned subsidiary of Rio Tinto Limited



# CORPORATE SNAPSHOT (ASX:AZY)



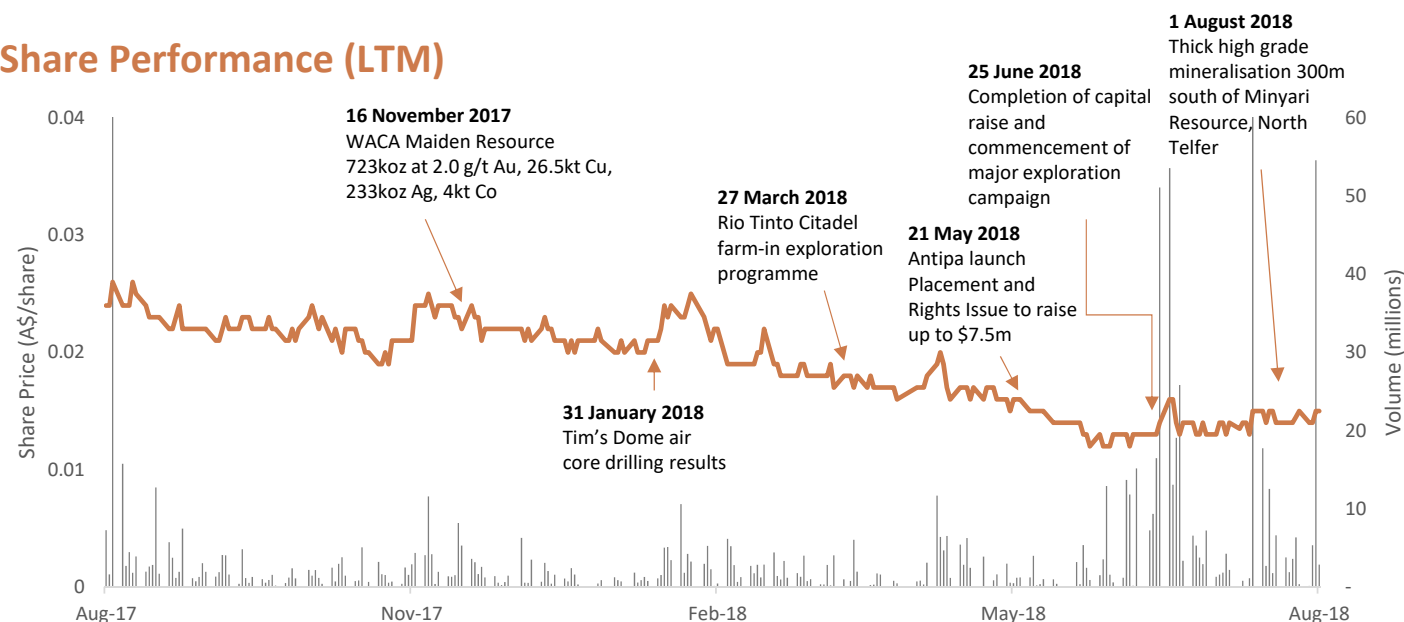
## Capital Structure

<b>Shares on Issue (M)</b> (Undiluted)	<b>1,805</b>
<b>Market Cap (M)</b> (at A\$0.015)	<b>27.1</b>
<b>Cash (M)</b> (End June. Q 2018)	<b>8.0</b>
<b>Debt (M)</b>	<b>nil</b>
<b>Enterprise Value (M)</b>	<b>19.1</b>
<b>Options<sup>1</sup> (M)</b>	<b>130.5</b>

## Board of Directors

<b>Stephen Power</b> Executive Chairman
<b>Roger Mason</b> Managing Director
<b>Mark Rodda</b> Non-Executive Director
<b>Peter Buck</b> Non-Executive Director
<b>Gary Johnson</b> Non-Executive Director

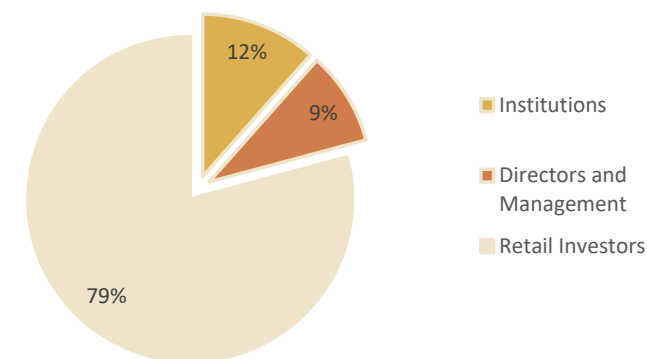
## Share Performance (LTM)



## Major Shareholders

<b>Directors and Management</b>	<b>7.8%</b>
<b>Citicorp Nominees</b>	<b>5.8%</b>
<b>JP Morgan Nominees</b>	<b>4.5%</b>
<b>Rosanne Pty Ltd</b>	<b>4.3%</b>
<b>Top 20</b>	<b>33.3%</b>

## Capital Breakdown

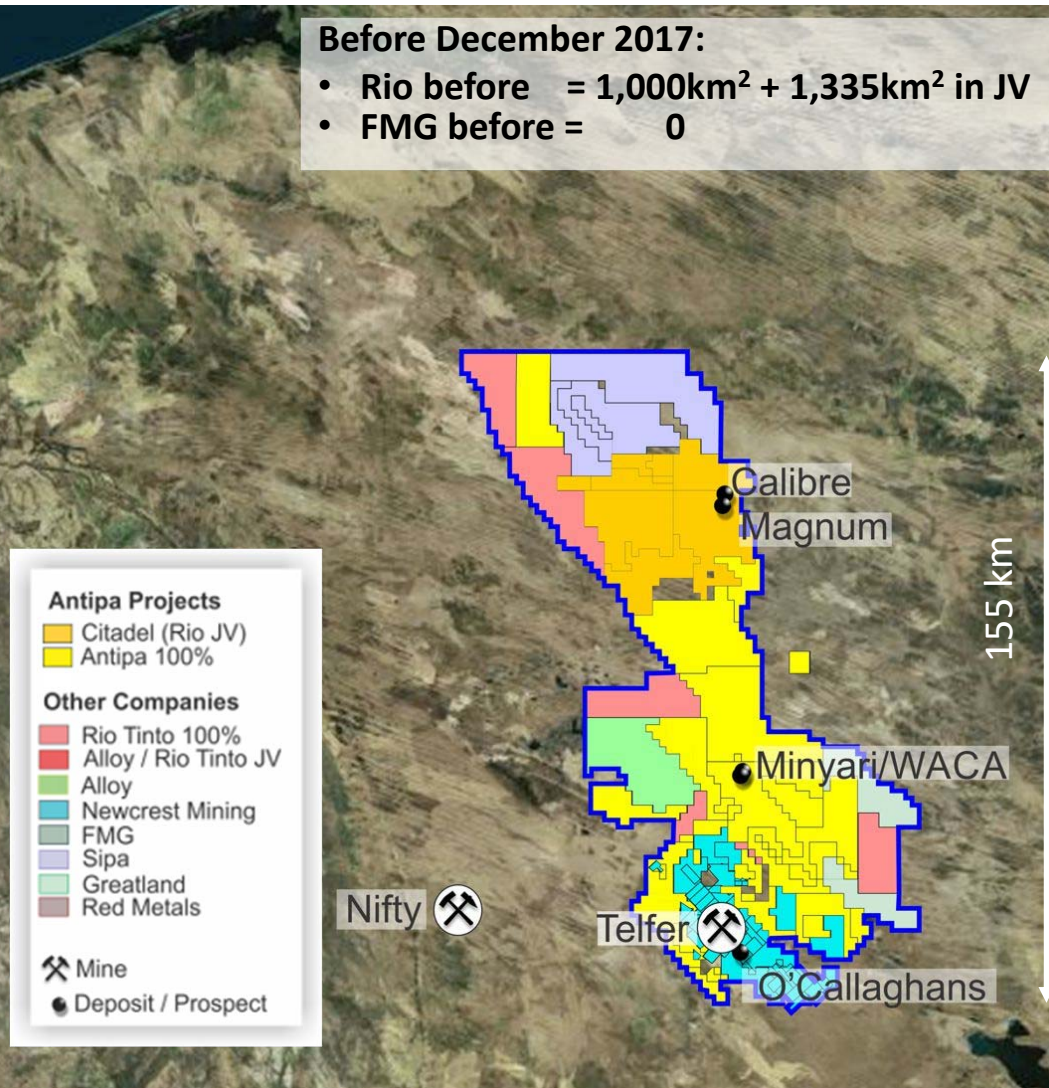


1. Options have an average exercise price of \$0.037 and would raise \$4.87m if exercised

# WORLD CLASS MINERAL PROVINCE – FIRST MOVER ADVANTAGE

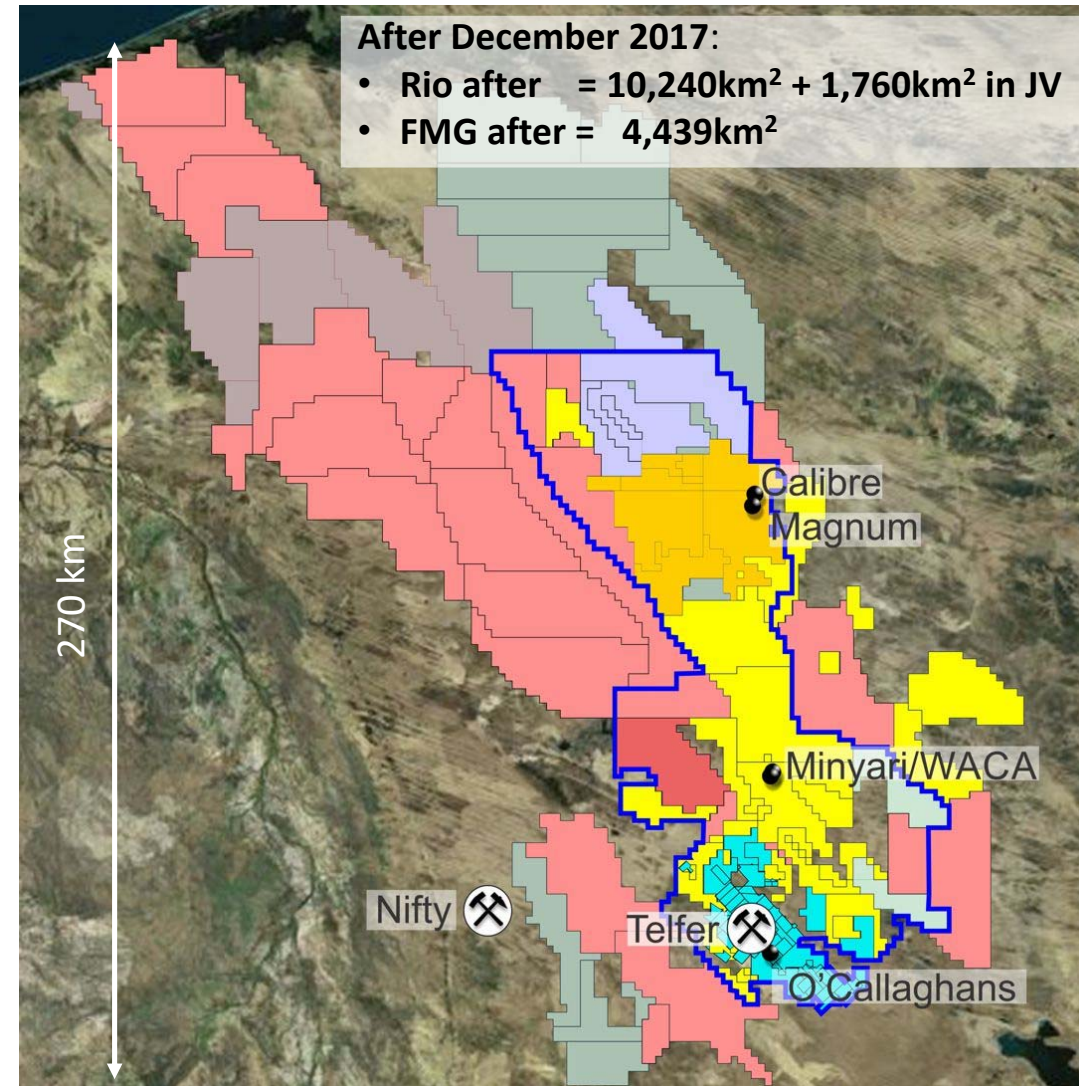
Before December 2017:

- Rio before =  $1,000\text{km}^2 + 1,335\text{km}^2$  in JV
- FMG before = 0



After December 2017:

- Rio after =  $10,240\text{km}^2 + 1,760\text{km}^2$  in JV
- FMG after =  $4,439\text{km}^2$





# 2018 EXPLORATION FOCUS - UNLOCKING THE PROVINCE'S NEXT MINE DEVELOPMENT OPPORTUNITY

## Programme Details

- The total programme will comprise a planned 50,000 m reverse circulation and air core drilling campaigns, an expansive aerial electromagnetic and Induced Polarisation (IP) geophysical survey, and surface geochemical sampling and geological mapping programmes

## Minyari and WACA

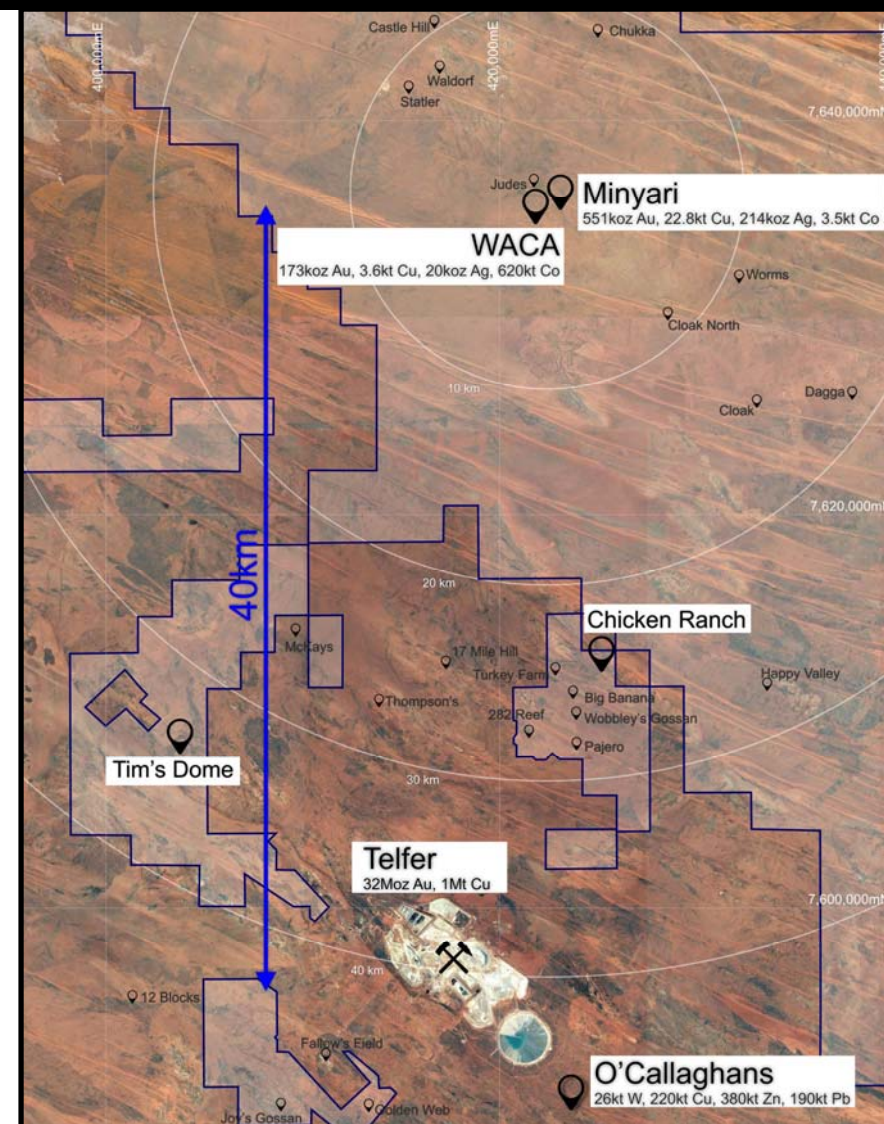
- Extend open pit mine mineralisation at Minyari and WACA deposits along strike from current resources
- Evaluate Minyari Dome satellite targets

## Tim's Dome and Chicken Ranch

- Evaluate existing high-grade gold deposits less than 30 kilometres from Minyari-WACA or Telfer
- Test multiple 1 to 3 km long zones of +1 g/t gold mineralisation
- Conduct IP survey and drill-test highly prospective 8 strike kilometre Tim's Dome east target

## Regional Exploration

- Explore, rank and systematically evaluate greenfield targets on 100% owned land including Aerial Electromagnetic survey of El Paso Corridor
- Continued support of Rio Tinto Joint Venture on the Citadel Project

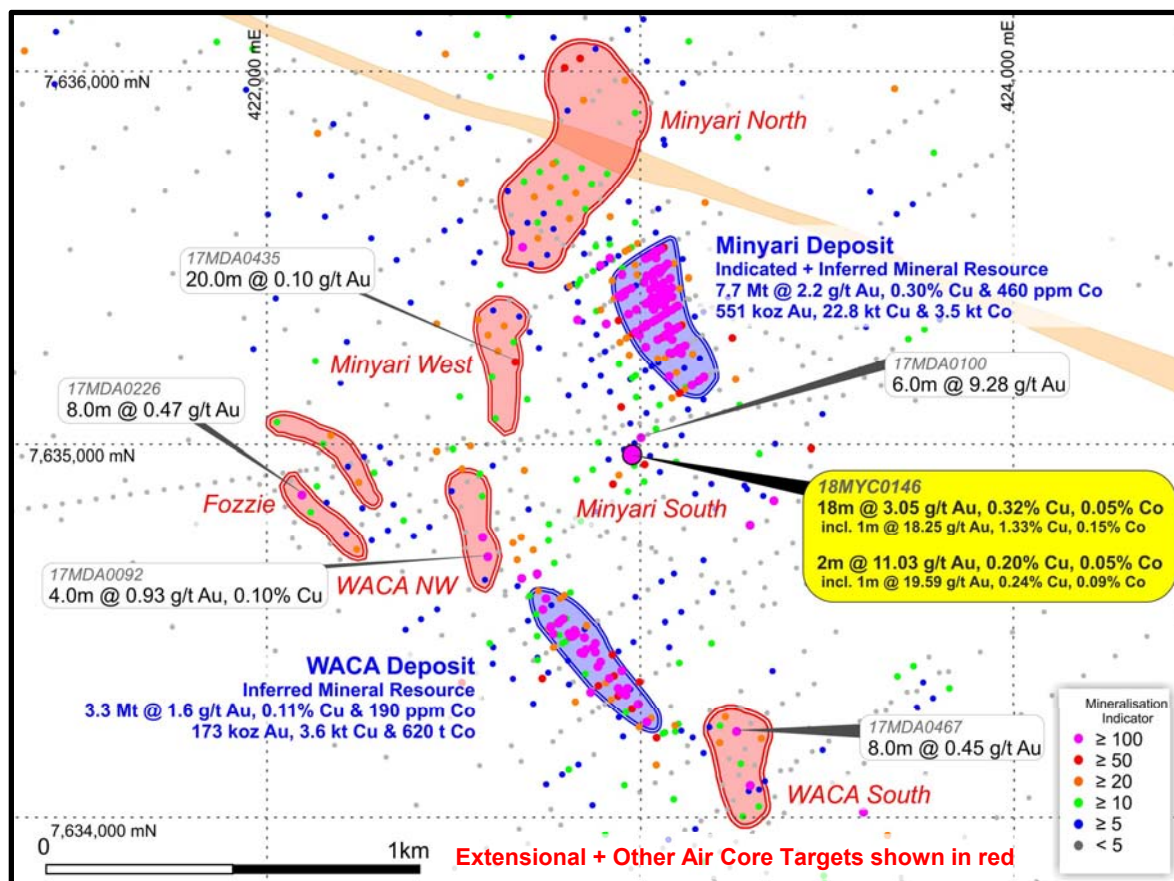






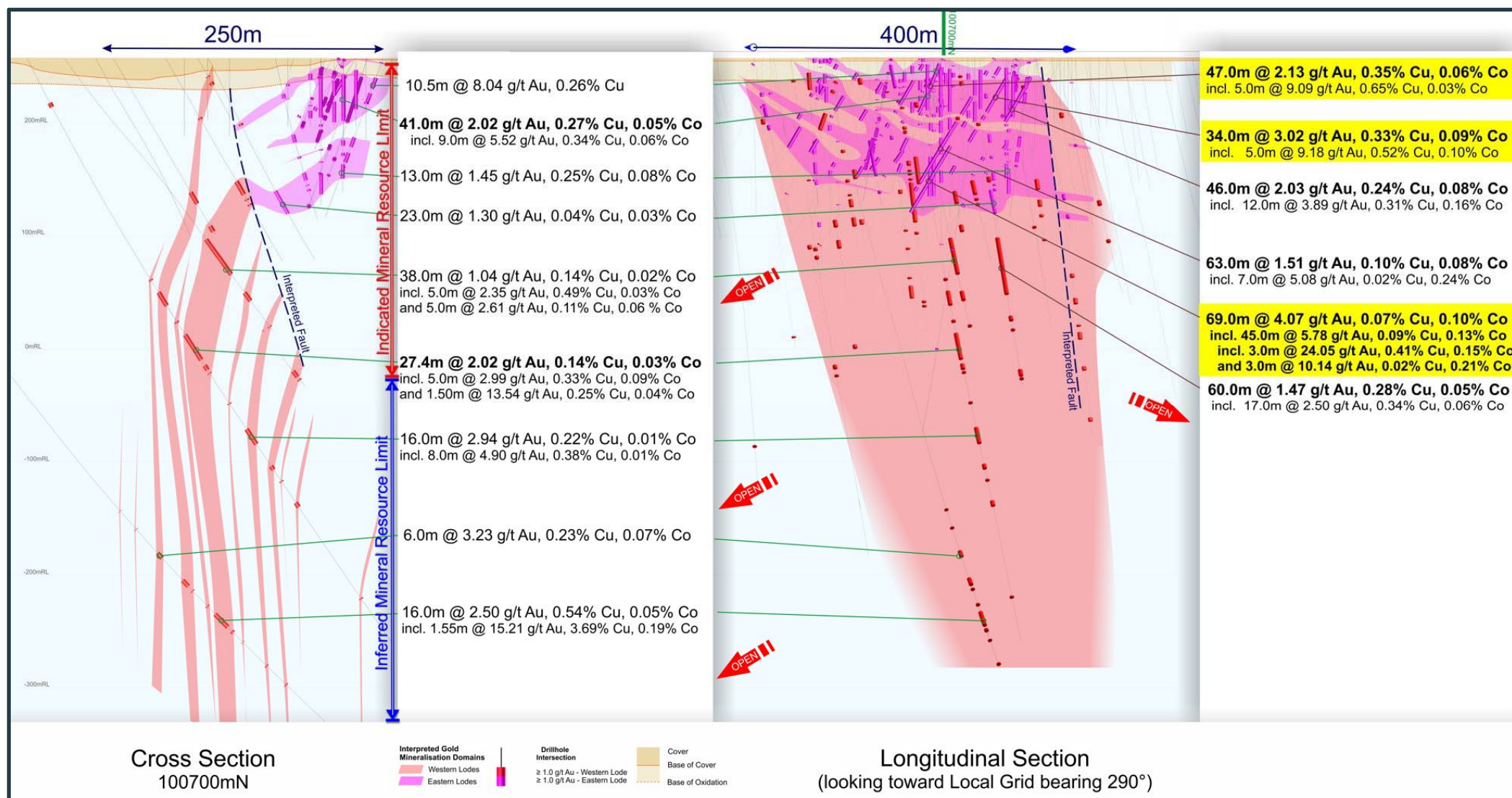


# MINYARI DOME – ESTABLISHED HIGH-GRADE OPEN PITABLE RESOURCE



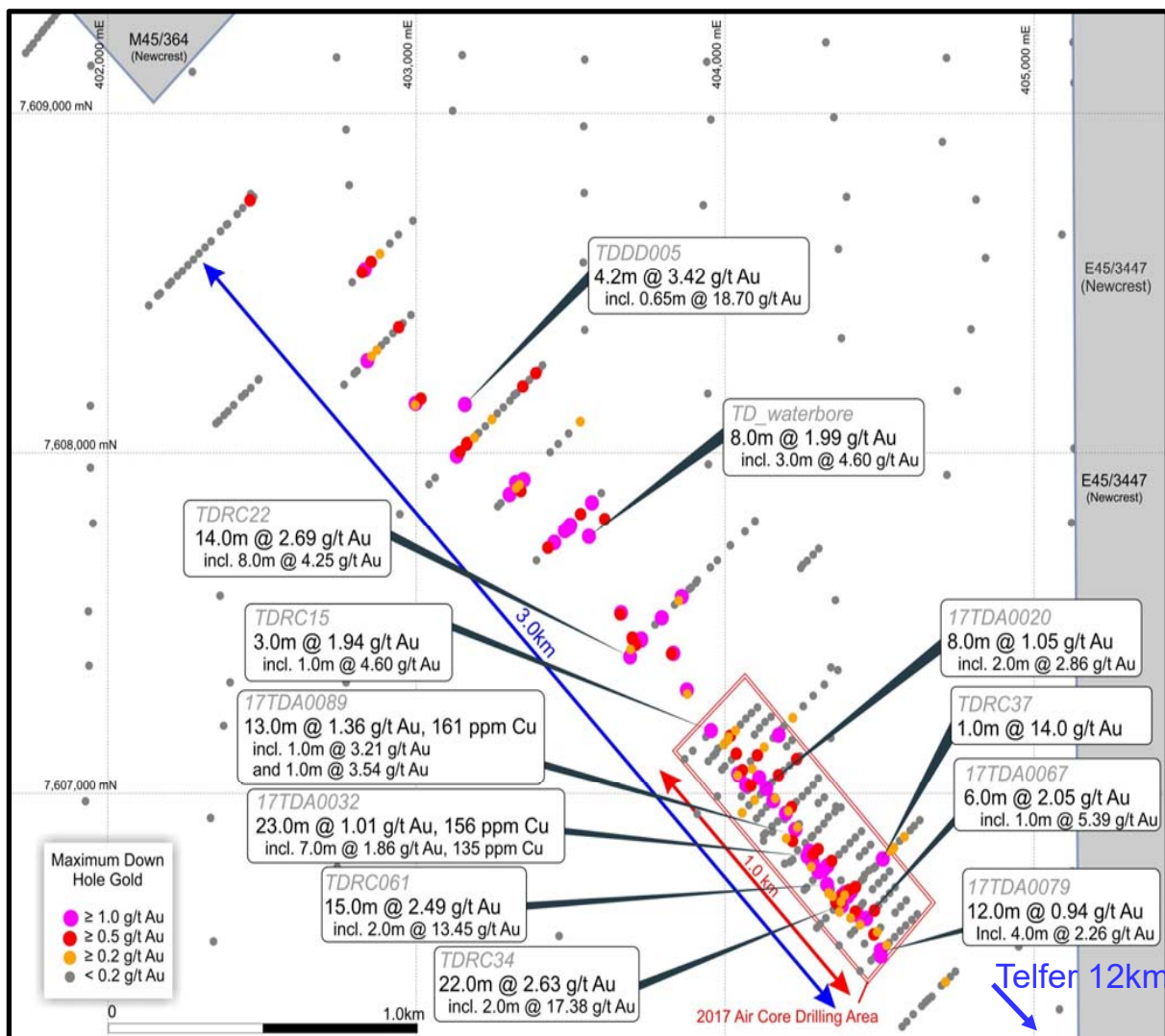
- 100% owned
- **Minyari-WACA Resource - Exploring for extensions**
  - Indicated and Inferred Mineral Resources of 11Mt grading 2.0 g/t Au, 0.24% Cu, 380ppm Co and 0.7 g/t Ag for **723,000oz Au, 26,000t Cu, 4,000t Co and 233,000oz Ag**
  - 2017 air core drilling programme identifies deposit extensional and nearby targets
  - Additional EM and IP targets
  - 2018 RC drilling in progress and delivers thick high-grade intercepts
  - Similar geology to Telfer
- **Near term development opportunity**
  - Minyari and WACA deposits both open-pittable with underground potential
  - Includes high-grade gold
  - Initial gold metallurgical test-work favourable
  - Copper and cobalt by-product metallurgical test-work in progress with preliminary results encouraging
  - Close to infrastructure – Just 40 km from Newcrest’s Telfer mine and processing facility

# MINYARI DOME – ESTABLISHED HIGH-GRADE OPEN PITABLE RESOURCE (Continued)





# TIM'S DOME – HIGH-GRADE GOLD OPPORTUNITY



## • Tim's Dome

- Gold ± copper mineralisation can commence from 1m
- Up to 200m wide gold bearing corridor over 4 km long
- Re-emergence of the Telfer Dome structures & mine host sequence
- Potential for high-grade Telfer Reef & Vein Style mineralisation
- Multiple high-grade gold targets identified

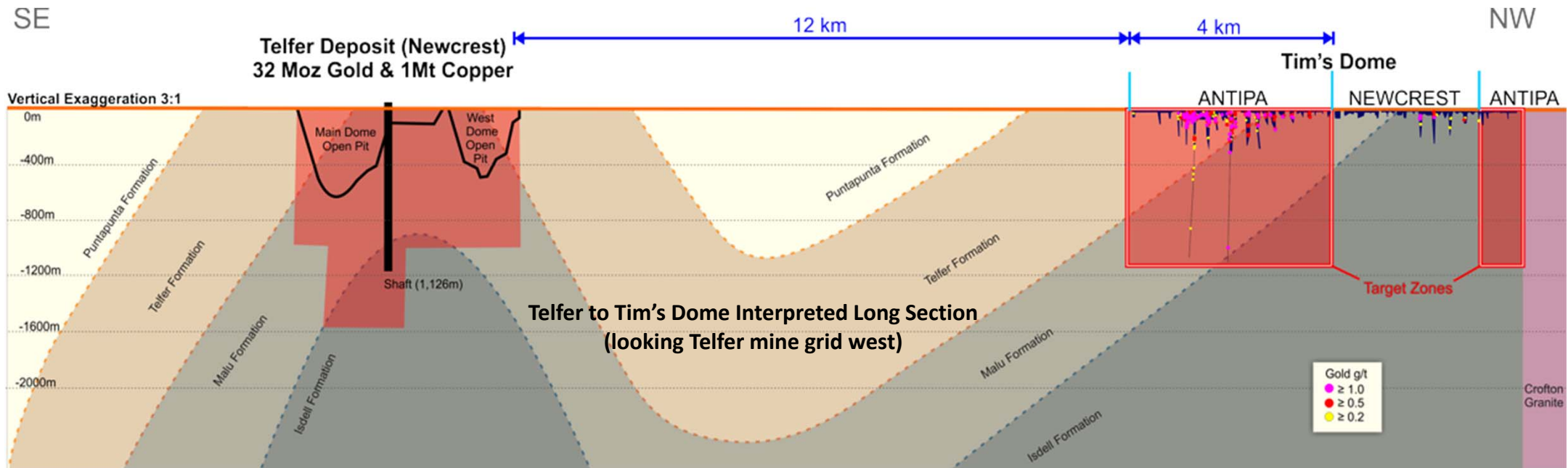
## • Location

- Just 12 km along strike of the giant Telfer gold-copper-silver mine
- 35 km from Minyari-WACA

## • Large exploration upside

- Limited broad spaced drill testing
- Average vertical hole depth just 45m
- Only 17 holes deeper than 140m below the surface
- Significant areas of thin sand cover with ineffective shallow geochem style drilling

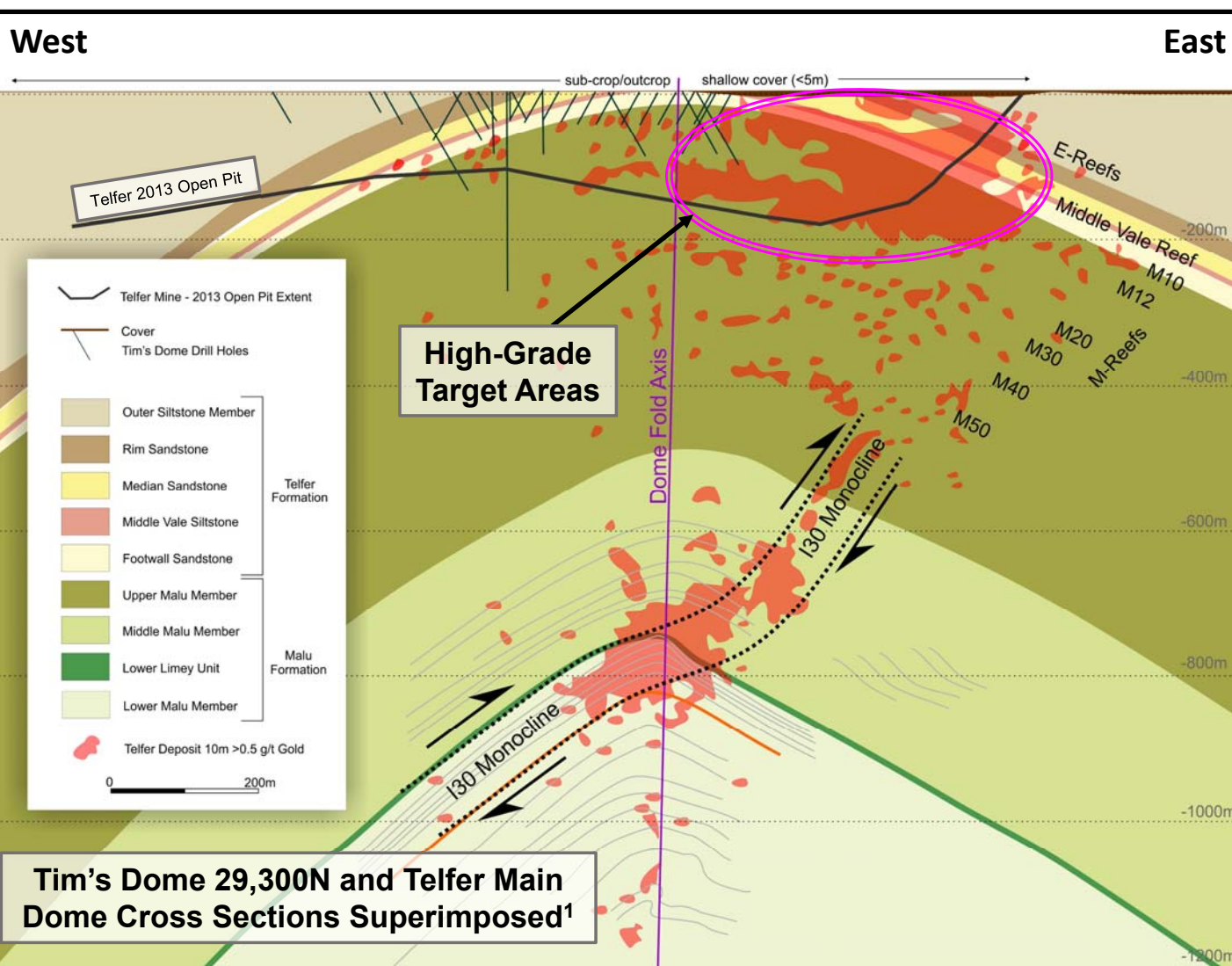
## TIM'S DOME – HIGH-GRADE GOLD OPPORTUNITY (Continued)



- Re-emergence at Tim's Dome of the Telfer Dome structures and mine host sequence
- Tim's Dome high-grade Telfer reef and vein style gold ± copper mineralisation potential poorly tested:
  - Key host rocks (i.e. Malu and Telfer Formations), key formation contacts and compelling structural targets remain effectively untested
  - Existing drilling is depth challenged and broad spaced (i.e. historically 200 to 500m sections)
  - Very limited electrical geophysical exploration to identify sulphide mineralisation (i.e. EM or IP) - Untested 2002 IP targets
- High-grade gold targets identified for drill testing



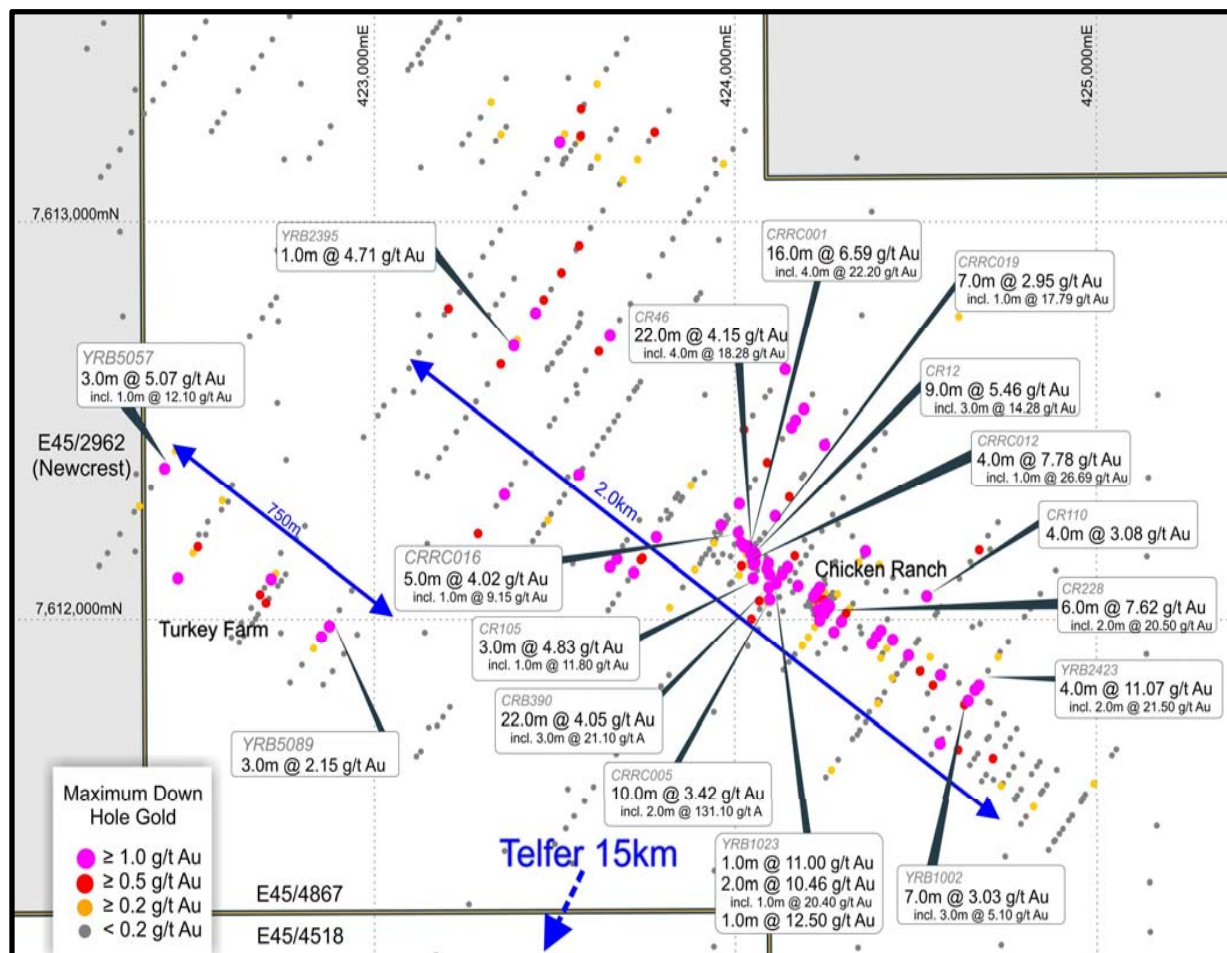
## TIM'S DOME – HIGH-GRADE GOLD OPPORTUNITY (Continued)



- Drilling almost exclusively focussed on the sub-cropping western side of Tim's Dome
- Telfer<sup>1</sup> high-grade Reef and vein style conceptual targets on eastern side of Tim's Dome, beneath shallow sand cover, remain untested
- Telfer<sup>1</sup> I30 Monocline and Oakover Vein conceptual targets also untested
- > 8 strike kilometres of this highly prospective eastern Malu–Telfer Formation contact remains untested

<sup>1</sup> Note: Telfer Main Dome interpreted cross section source University of Western Australia, Centre for Exploration Targeting, 2013. Superimposed on Tim's Dome 29,300N Local Grid cross section by rotating 14° anticlockwise to align Tim's Dome and Telfer Dome fold axes and Malu-Telfer Formation contact.

# CHICKEN RANCH – HIGH-GRADE GOLD OPPORTUNITY



## Chicken Ranch

- High-grade gold mineralisation from as shallow as 1m
- Mineralisation along a 3 km strike length within four or more parallel mineralised gold trends

## Location

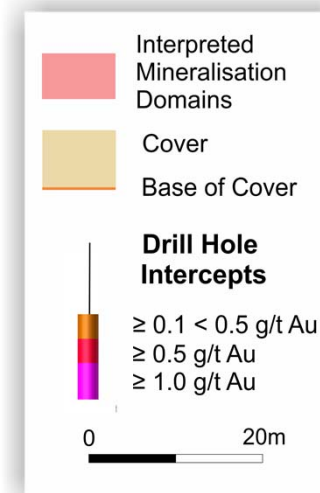
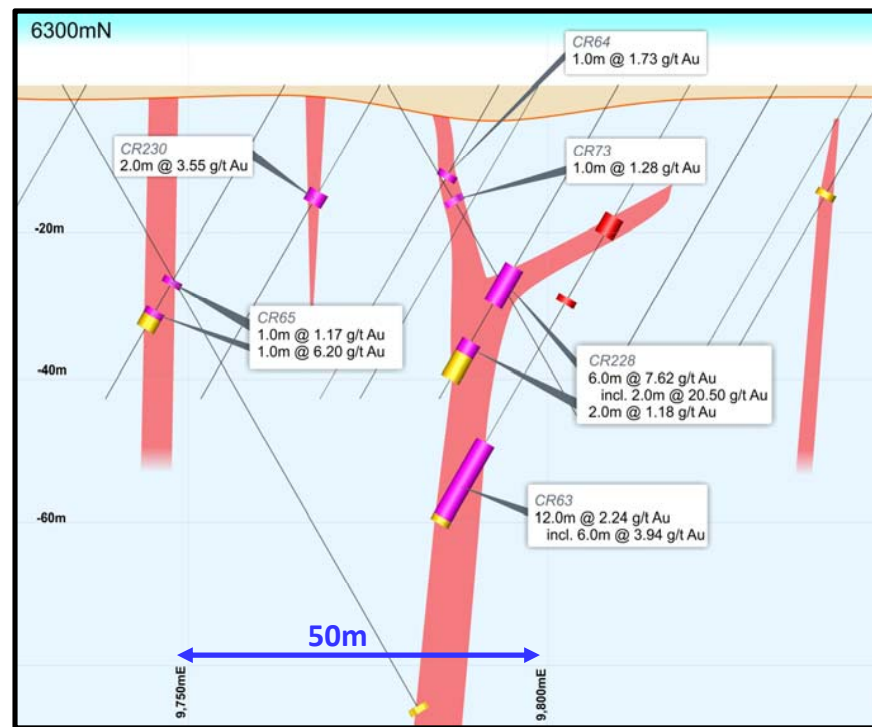
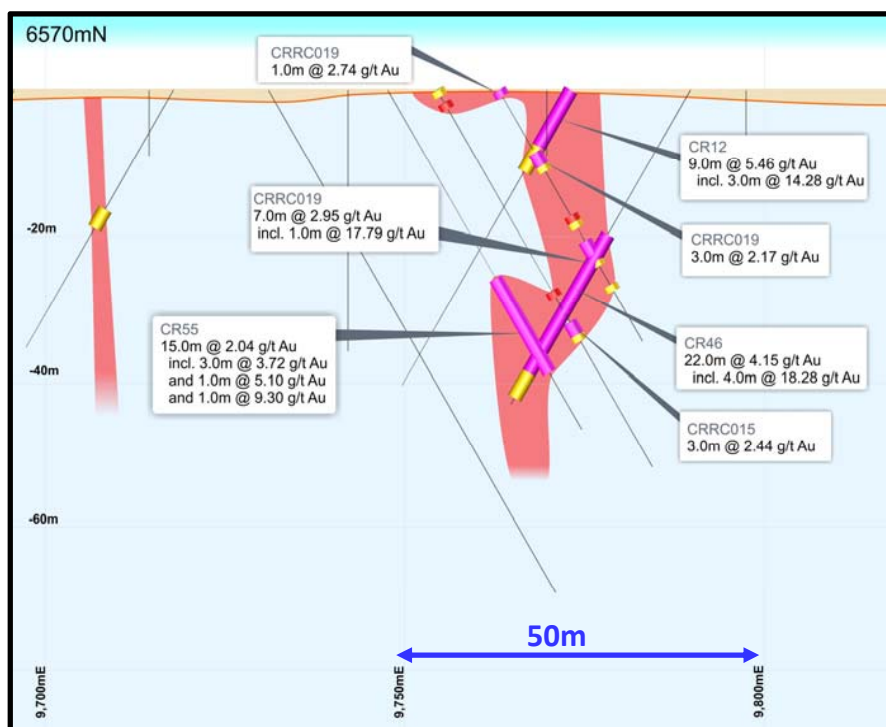
- Just 15 km from Telfer and 25 km from Minyari-WACA
- Tenement recently granted

## Large exploration upside

- Significant +1 g/t gold intersections open along strike
- Multiple poorly tested mineralised trends displaying significant strike extent (i.e. 500 to +1,000m)
- Significant areas of thin sand cover with ineffective shallow geochem style drilling (Avg. hole depth 54m)
- Primary mineralisation untested
- No electrical geophysical exploration to identify sulphide mineralisation (i.e. EM or IP)
- Drill testing of high-grade gold targets in progress

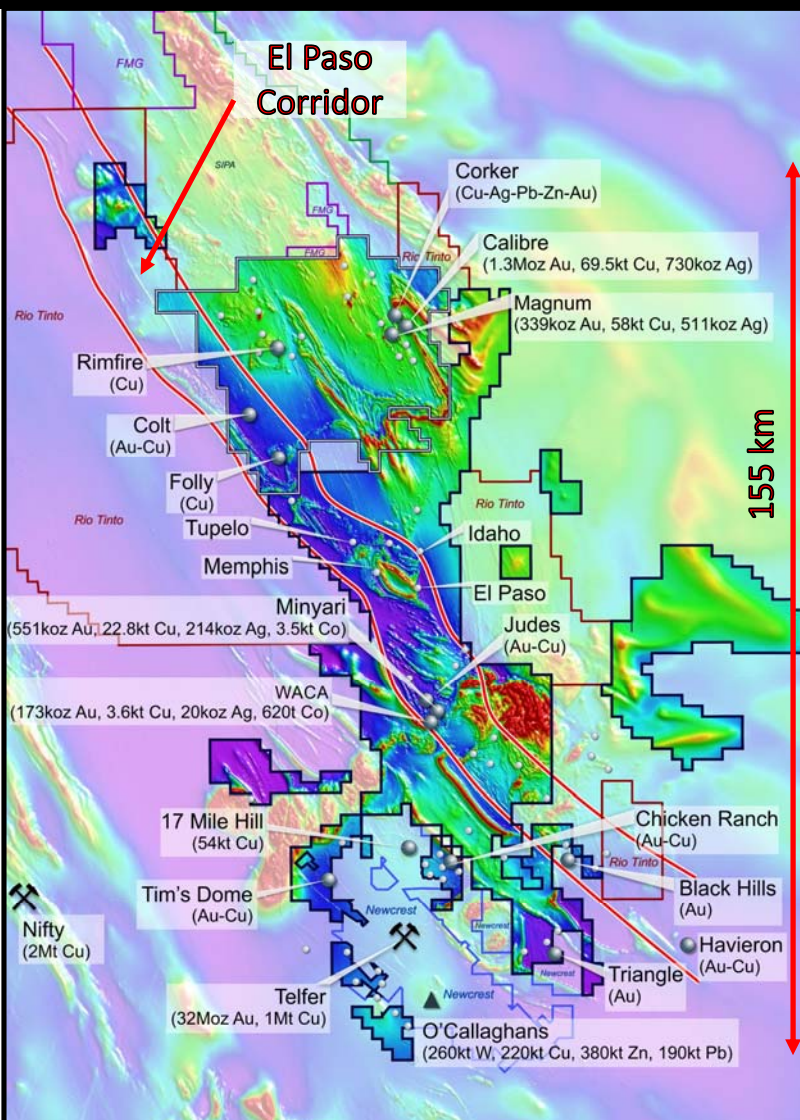


## CHICKEN RANCH – HIGH-GRADE GOLD OPPORTUNITY (Continued)



- **Chicken Ranch high-grade gold ± copper mineralisation potential poorly tested:**
  - Plunging high-grade gold shoots not recognised by previous explorers - Many shoots remain open or untested
  - Largely shallow drilling – Primary mineralisation untested
  - Multiple poorly tested mineralised trends displaying significant strike extent (i.e. 500 to +1,000m) – Several trends barely tested
  - No electrical geophysical exploration to identify sulphide mineralisation (i.e. EM or IP)
- **Drill testing of high-grade gold targets in progress**

# WORLD-CLASS EXPLORATION POTENTIAL



## • Huge exploration upside

- Underexplored and shallowly covered granted tenure in world-class province:

- 50% of Antipa's portfolio is under 0 to 20m cover; and
- 30% of Antipa's portfolio is under 20 to 80m cover.

- Thin cover preserves exploration opportunity
- 2018 Priority to explore, rank and systematically evaluate greenfield targets on 100% owned land:

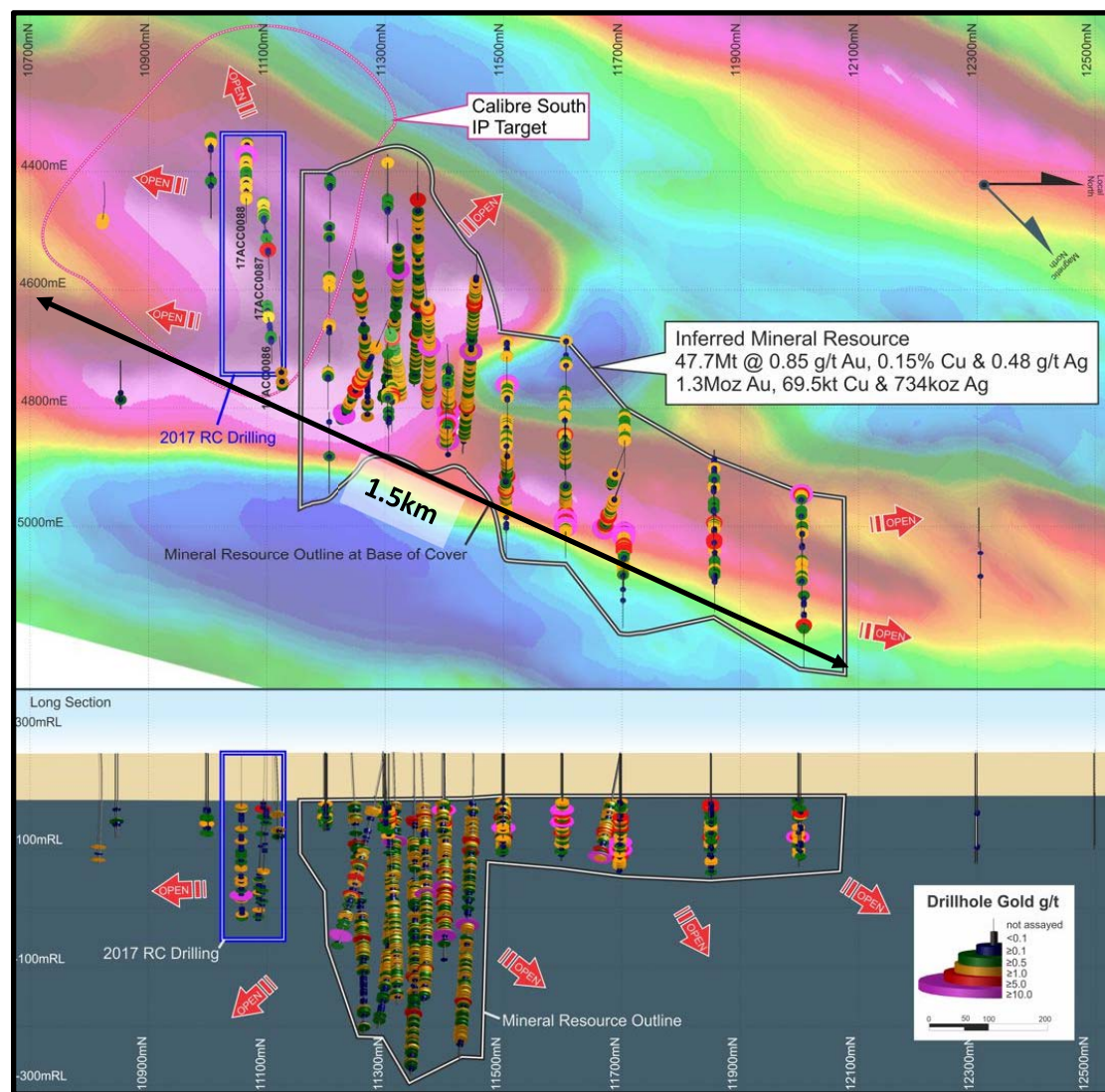
- Including Aerial Electromagnetic surveys and follow-up drill testing of targets

## • Highly prospective El Paso Corridor

- Structural corridor hosting multiple reduced felsic intrusions, mineral deposits, prospects and targets:
  - Potentially akin to a porphyry copper-gold belt
- Extends for 25 km on Citadel Project JV
- Extends for 85 km on 100% Antipa owned land
- Limited or ineffective surface sampling & shallow geochem style drilling
- Virtually no existing electrical geophysics (i.e. EM or IP):
  - State-of-the-art Aerial EM responsible for multiple discoveries since 2011



# CITADEL PROJECT – RIO TINTO FARM-IN AND JOINT VENTURE



## • Rio Tinto \$60m Staged Earn-In

- Rio to incur \$60m total exploration expenditure for up to 75% interest
  - Note: Rio has the right to withdraw from the earn-in at the end of a programme year.

## • Calibre Deposit (gold, copper, silver, tungsten)

- Very large scale mineral system
- Inferred Mineral Resource 47.7 Mt at 0.85 g/t Au, 0.15% Cu and 0.48 g/t Ag for 1.3 million oz Au, 70,000 t Cu and 730,000 oz Ag
- Resource open in most directions
- RC drill testing in 2017 of large IP target area south of resource returns 214m at 0.34 g/t gold and 0.07% copper including 44m at 0.70 g/t gold and 0.13% copper

## • Magnum Deposit (gold, copper, silver ± tungsten)

- Large scale mineral system less than 2 km from Calibre
- Inferred Mineral Resource 16.1 Mt at 0.66 g/t Au, 0.36% Cu and 0.99 g/t Ag for 339,000 oz Au, 58,000 t Cu and 511,000 oz Ag
- Resource open in most directions

## • Rio Tinto (100%) post December 2017 now hold almost 9,000 km<sup>2</sup> of ground in the Paterson Province

# INDICATIVE TIMETABLE – NEXT TWELVE MONTHS

	Jun	Jul	Aug	Sep	Oct	Nov	Dec	Jan	Feb	Mar	Apr	May
<b>Antipa 100% Projects:</b>												
Reverse Circulation Drilling Programmes <sup>1</sup>		Minyari Dome & Chicken Ranch <sup>1</sup>			Chicken Ranch & Tim's Dome <sup>1</sup>				Test New Targets <sup>1</sup>			
Air Core Drilling Programmes <sup>1</sup>		Chicken Ranch & Tim's Dome <sup>1</sup>		Tim's Dome <sup>1</sup>					Test New Targets <sup>1</sup>			
Geophysical Programmes – Induced Polarisation <sup>1</sup>			Tim's Dome & Chicken Ranch <sup>1</sup>									
Geophysical Programmes – Electromagnetics (EM) <sup>1</sup>		El Paso Corridor – Aerial EM Survey <sup>1</sup>										
Project Evaluation Activities <sup>1</sup>		Minyari Met Testwork						Mineral Resource Estimates & Mining Studies <sup>1</sup>				
<b>Citadel Project<sup>1</sup>:</b> (Rio Tinto Farm-in)			Folly Area Exploration Programme – El Paso Corridor <sup>1</sup>									

<sup>1</sup> Note: Timing, details and scope of all drilling and exploration programmes may change and are dependant upon finalisation of Equity Raising, exploration results, field conditions and ongoing review



# STRONG VALUE PROPOSITION RELATIVE TO PEERS



Data collected as per Capital IQ and Company Websites on 31 May 2018 (Averages are taken excluding AZY)

1. AZY – Excluding 100% Citadel Project    2. AZY – Including 100% Citadel Project    3. GCY - Excluding Glenburgh

# **ANTIPA MINERALS UNLOCKING THE PATERSON PROVINCE**

**TIER ONE UNDER-EXPLORED EXPLORATION PORTFOLIO**

**OUTSTANDING OPPORTUNITY TO ADD SIGNIFICANTLY TO THE EXISTING  
MINYARI/WACA RESOURCE**

**EVALUATION OF THE LARGELY UNTESTED TIM'S DOME 'TELFER REEF STYLE'  
HIGH GRADE TARGETS**

**EL PASO CORRIDOR – SUBSTANTIAL UPSIDE TO BE REALISED IN 2018**





## Contacts

---

### **Executive Chairman**

Mr Stephen Power

E: [stephen.power@antipaminerals.com.au](mailto:stephen.power@antipaminerals.com.au)

### **Managing Director**

Mr Roger Mason

E: [roger.mason@antipaminerals.com.au](mailto:roger.mason@antipaminerals.com.au)

Corporate Office  
Level 2, 16 Ord Street  
West Perth WA 6005

PO Box 795  
West Perth WA 6872  
T: +61 8 9481 1103  
F: +61 8 9481 0117

**ASX Code : AZY**

**[www.antipaminerals.com.au](http://www.antipaminerals.com.au)**

## NOTES: BOARD = 160 YEARS COMBINED EXPERIENCE



**Stephen Power**  
**LLB**  
**Executive Chairman**

Lawyer with 31+ years' experience advising participants in the resources industry in Australia and overseas

Former director and current advisor to Karoon Gas - Former external legal advisor to LionOre Mining International

Extensive corporate experience in resources sector including, joint ventures, farm-ins, equity and debt raisings, project financing, mergers and acquisitions, project construction, contract mining and related activities



**Roger Mason**  
**BSc (Hons), MAusIMM**  
**Managing Director**

Geologist with 31+ years resources industry experience involving exploration, project, mining and business development roles covering a range of commodities in Australia and overseas including Africa and North America

Former General Manager Geology for LionOre Australia and Norilsk Nickel - Commenced with WMC in 1987, followed by LionOre Mining International in 1997

Discovery of the Calibre, Victor South and Corker deposits - Significant feasibility, development, production and consulting experience



**Mark Rodda**  
**BA, LLB**  
**Non-Executive Director**

Lawyer with 20+ years private practice, in-house legal and corporate management experience

Director of Lepidico - Former Chairman of Coalspur Mines - Former General Counsel of LionOre Mining International

Development and operational experience, including Emily Ann and Maggie Hays, Thunderbox, Waterloo, Black Swan, Honeymoon Well and Vista Projects

Experienced in equity and debt financing, joint ventures and strategic alliances, corporate transactions, governance, compliance and audit



**Peter Buck**  
**MSc, MAusIMM**  
**Non-Executive Director**

Geologist with 40+ years international exploration, acquisition and production experience

Director of Independence Group – Former Chairman of PMI Gold, Former Director Gallery Gold and Breakaway Resources - Former Director, Exploration and Geology for LionOre Australia – Former WMC Exploration Executive and Country Manager of Brazil

Discovery of Maggie Hays, Emily Ann and Thunderbox deposits - Significant feasibility, development and production experience – Governance and audit experience



**Gary Johnson**  
**MAusIMM, MTMS, MAICD**  
**Non-Executive Director**

Metallurgist with 35+ years experience in the mining industry, including operational, plant design, and project development

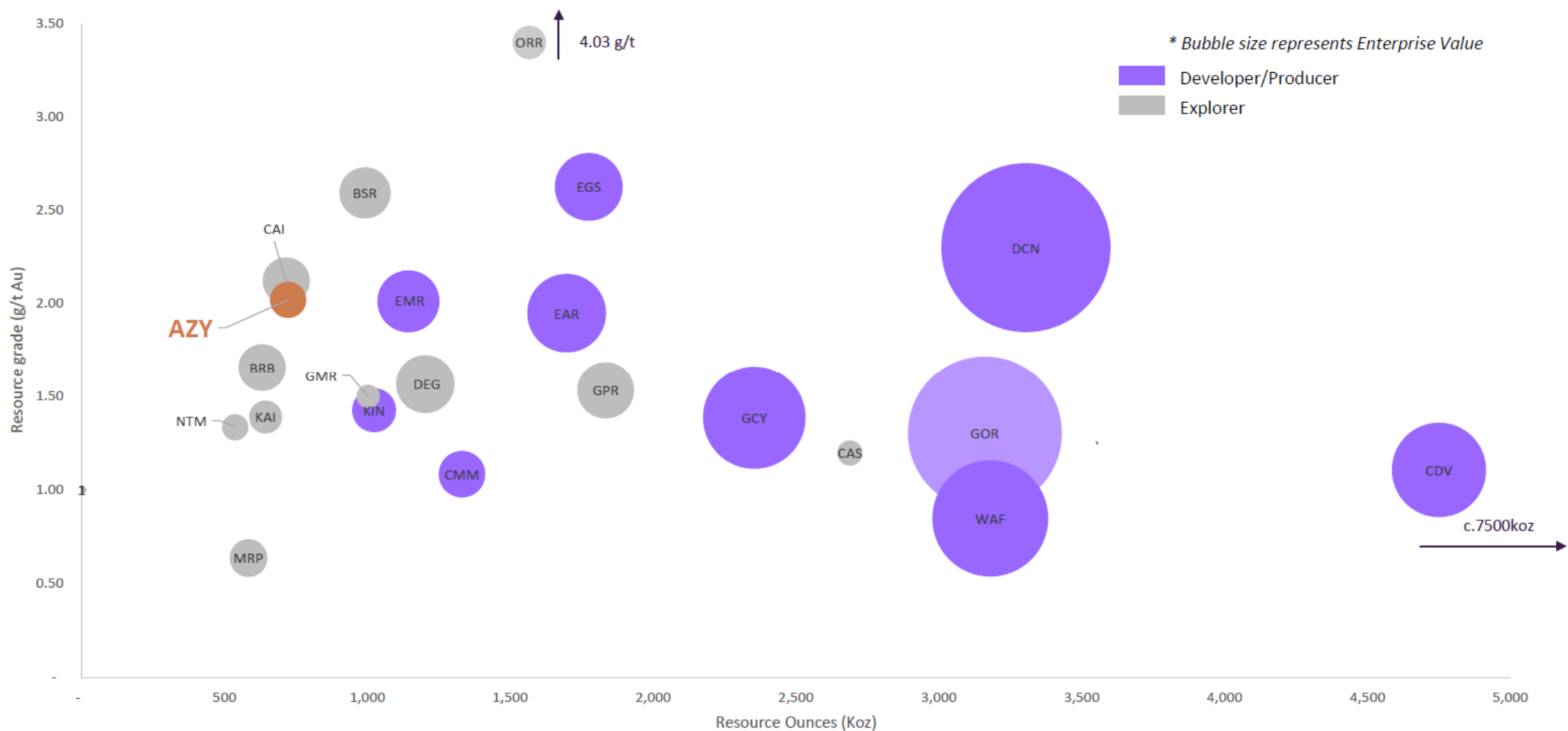
Director of Strategic Metallurgy, a niche metallurgical consultancy which developed the split concentrate flowsheet for IGO's Nova project

Developer of L-Max technology for lithium which was successfully vended into Lepidico - Chairman of Lepidico

Former Director of LionOre's Tati Nickel, which developed and commercialised the Activox technology for treatment of nickel sulphide concentrates



## NOTES: STRONG VALUE PROPOSITION RELATIVE TO PEERS



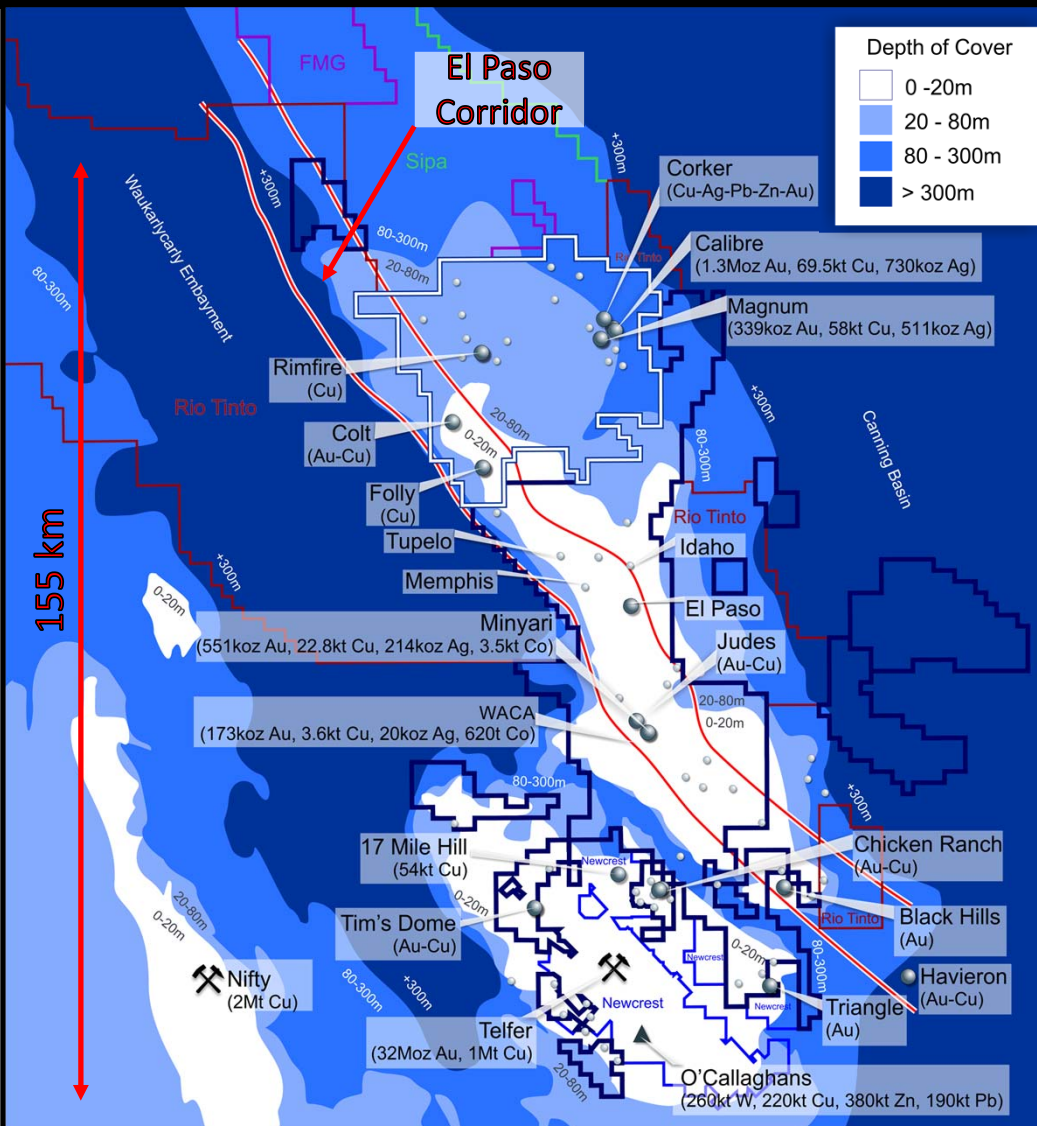
Data collected as per Capital IQ and Company Websites on 31 May 2018 (Averages are taken excluding AZY)

1. AZY – Excluding 100% Citadel Project

2. AZY – Including 100% Citadel Project

3. GKY - Excluding Glenburgh

## NOTES: PRESERVATION OF WORLD-CLASS EXPLORATION POTENTIAL



### • Thin cover preserves exploration opportunity:

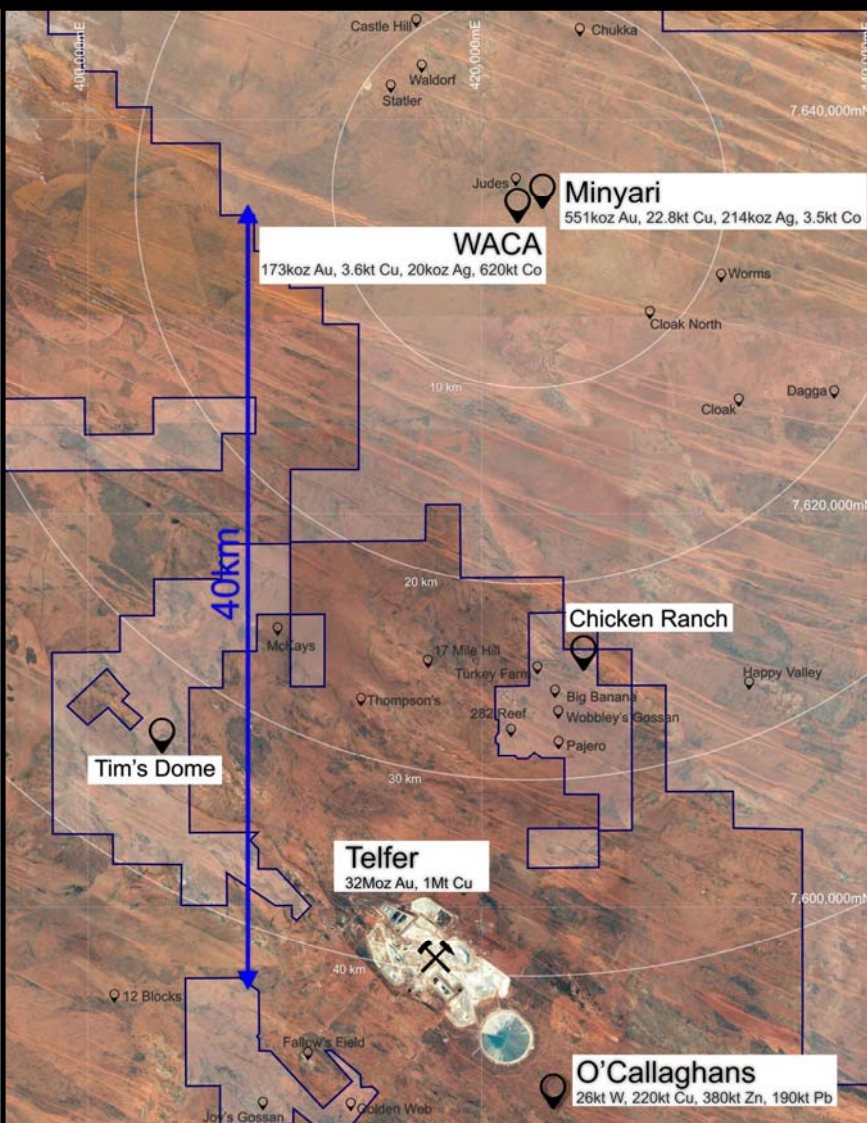
- Eastern Paterson Province areas < 80m of cover:
  - Antipa Tenements = 56%
  - Other Companies' Tenements = 44% (NB: Newcrest = 14%)
- Inhibited previous explorers (1970's to mid-1990's)
- Major technology and research driven exploration improvements over the last one to two decades:
  - Geophysics (i.e. Electromagnetics, IP, Airborne gravity, etc)
  - Geochemistry (i.e. Ultra low detection limit analytical techniques with mineralisation pathfinder suites now routine)
  - Paterson Province deposit formation processes and targeting

### • Cover is geophysics "user friendly"

- Electromagnetics - Since 2011 highly effective and efficient in the discovery of eastern Paterson Province mineralised semi-massive to massive sulphides:
  - Cover generally devoid of conductive material (i.e. conductive lithologies and/or hyper-saline groundwater)
- Induced Polarisation effective in mapping mineralised disseminated sulphide systems or related halos
- Aeromagnetics produces "crisp" basement map detail



## NOTES: UNLOCKING THE PROVINCE'S NEXT MINE DEVELOPMENT



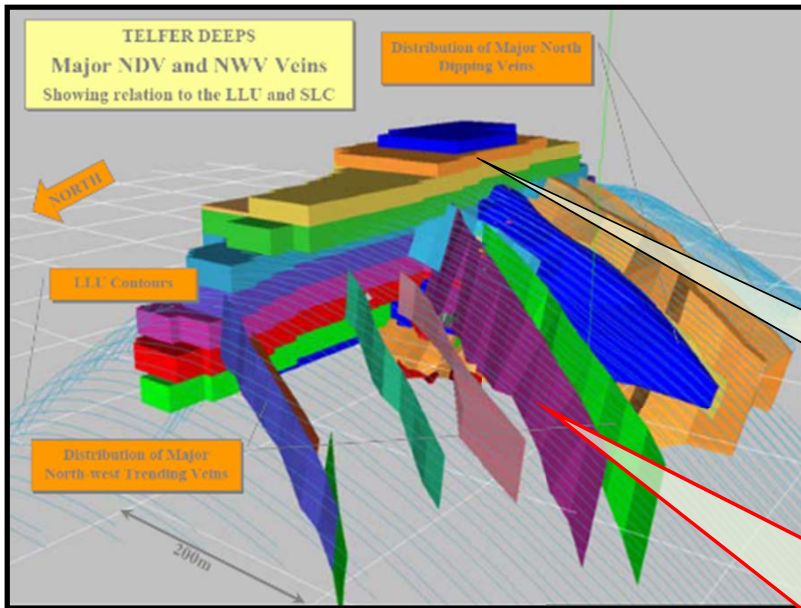
### North Telfer and Paterson Projects

- 4,100 km<sup>2</sup> of highly prospective 100% owned ground
- Tenements within 3 km of Newcrest's Telfer Mine
- Shallow cover to sub-cropping
- Limited to no exploration for 20 to 30 years
- Minyari and WACA mine development opportunity

### Analogue to Telfer

- Antipa's Projects include the same structural, host-rock and hydrothermal mineralisation settings as the 32Moz Telfer deposit
  - Telfer's June 2000 Underground Mineral Resource was 3.5Mt at 13.8 g/t gold for 1.5Moz gold
  - Telfer was discovered in 1972 and has produced 14Moz of gold from 37 of the last 41 years and is mined from surface to in excess of 1km below surface
  - Telfer's high-grade ore characteristics of gold grades of 2.0 to 60.0 g/t, copper grades of 0.5 to 4.0% over ore thicknesses of 4 to 15 metres along strike lengths in excess of 2 km extending for several hundred metres down dip

# NOTES: TELFER – WORLD CLASS HIGH-GRADE GOLD DEPOSIT



- Antipa's Projects include the same structural, host-rock and hydrothermal mineralisation settings as Telfer
- Telfer's June 2000 Underground Mineral Resource was 3.5 Mt at 13.8 g/t gold for 1.5 Moz gold
- Telfer was discovered in 1972 and has produced 14 Moz of gold from 37 of the last 41 years

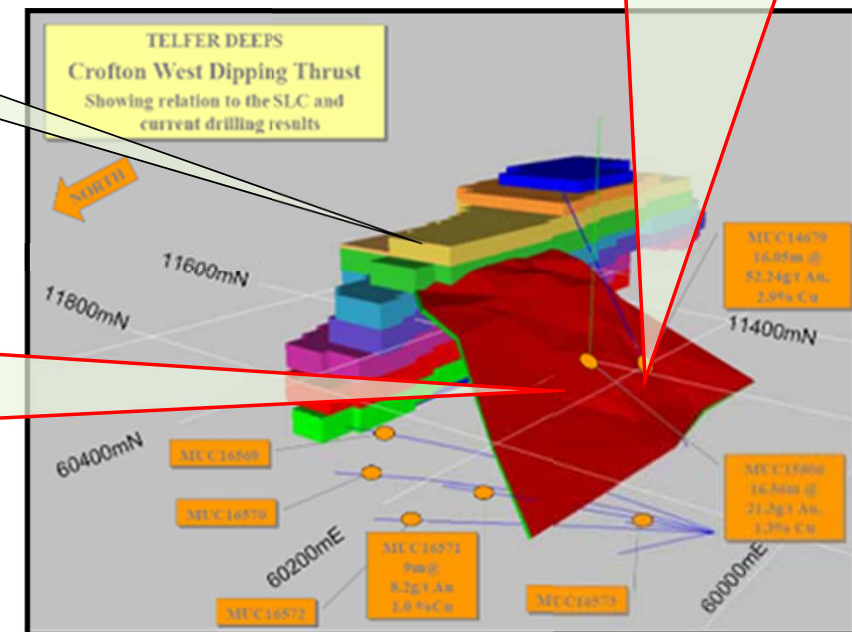
VSC dominated by low-grade high tonnage mineralisation

High-grade gold vein style mineralisation  
e.g. 10.0m at 10.0 g/t gold

Telfer's high-grade reef style ore zones dominated Telfer's first 23 years of gold production:

- High-grade Reef Style ore zones mined from surface to in excess of 1 km below the surface
- Gold grades 2.0 to 60.0 g/t
- Copper grades 0.5 to 4.0%
- Ore thickness 4 to 15 metres
- Greater than 800 metres strike length, and
- Several hundred metres down dip

Telfer Reef Style = Very high-grade bedding parallel mineralisation  
e.g. 16.1m at 52.2 g/t gold & 2.9% copper



Source: Newcrest Exploration Seminar April 2003: ASX Lodged: <http://www.asx.com.au/asxpdf/20030409/pdf/00355204.pdf>

## North Telfer Project

Deposit & Gold Cut-off Grade*	Resource Category	Tonnes (Mt)	Gold Grade (g/t)	Copper Grade (%)	Cobalt (ppm)	Gold (oz)	Copper (t)	Cobalt (t)
Minyari 0.5 Au	Indicated	3.2	1.9	0.3	590	192,610	9,600	1,860
Minyari 0.5 Au	Inferred	0.7	1.7	0.24	340	36,260	1,560	220
<b>Minyari 0.5 Au</b>	<b>Sub-Total</b>	<b>3.8</b>	<b>1.9</b>	<b>0.29</b>	<b>550</b>	<b>228,870</b>	<b>11,160</b>	<b>2,080</b>
Minyari 1.7 Au	Indicated	0.2	2.6	0.29	430	18,740	650	100
Minyari 1.7 Au	Inferred	3.7	2.6	0.3	370	303,000	10,950	1,360
<b>Minyari 1.7 Au</b>	<b>Sub-Total</b>	<b>3.9</b>	<b>2.6</b>	<b>0.3</b>	<b>380</b>	<b>321,740</b>	<b>11,600</b>	<b>1,460</b>
<b>Minyari</b>	<b>Total</b>	<b>7.7</b>	<b>2.2</b>	<b>0.3</b>	<b>460</b>	<b>550,610</b>	<b>22,760</b>	<b>3,540</b>
WACA 0.5 Au	Inferred	2.8	1.4	0.11	180	121,950	3,120	500
WACA 1.7 Au	Inferred	0.5	2.9	0.09	230	50,780	510	120
<b>WACA</b>	<b>Total</b>	<b>3.3</b>	<b>1.6</b>	<b>0.11</b>	<b>190</b>	<b>172,730</b>	<b>3,630</b>	<b>620</b>
<b>Minyari + WACA Deposits</b>	<b>Grand Total</b>	<b>11.0</b>	<b>2.0</b>	<b>0.24</b>	<b>380</b>	<b>723,340</b>	<b>26,390</b>	<b>4,060</b>

\*0.5 Au = Using a 0.5 g/t gold cut-off grade above the 50mRL (NB: potential "Open Cut" cut-off grade)

\*1.7 Au = Using a 1.7 g/t gold cut-off grade below the 50mRL (NB: potential "Underground" cut-off grade)

## Citadel Project (Rio Tinto Farm-in and Joint Venture)

Deposit & Gold Cut-off Grade**	Resource Category	Tonnes (Mt)	Gold Grade (g/t)	Copper Grade (%)		Gold (oz)	Copper (t)
Calibre 0.5 AuEquiv	Inferred	47.7	0.9	0.15		1,300,000	69,500
Magnum 0.5 AuEquiv	Inferred	16.1	0.7	0.36		339,000	57,800
<b>Calibre + Magnum Deposits</b>	<b>Total</b>	<b>63.8</b>	<b>0.8</b>	<b>0.20</b>		<b>1,639,000</b>	<b>127,300</b>

\*\*0.5 AuEquiv = Refer to details provided by the Notes section



## NOTES: MINYARI DEPOSIT NEAR SURFACE HIGH-GRADE GOLD MINERALISATION

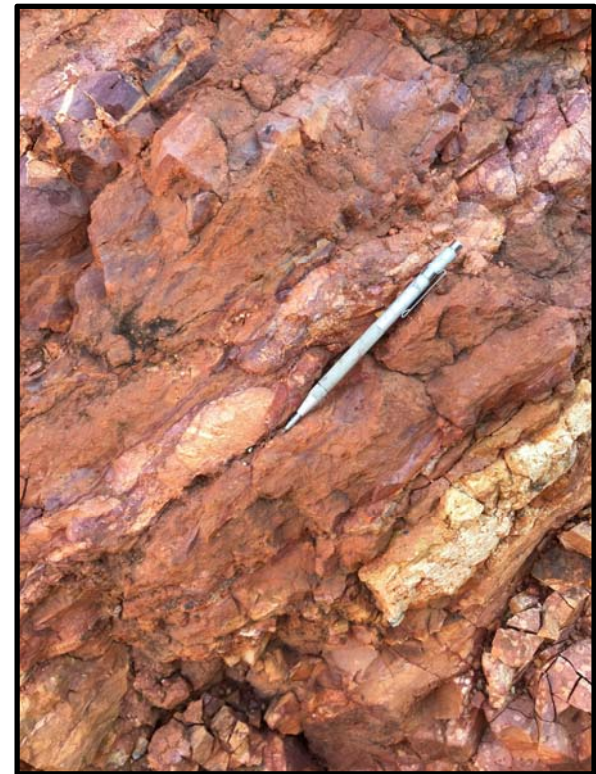


Minyari Deposit oxide mineralisation commences from 1 metre below the surface

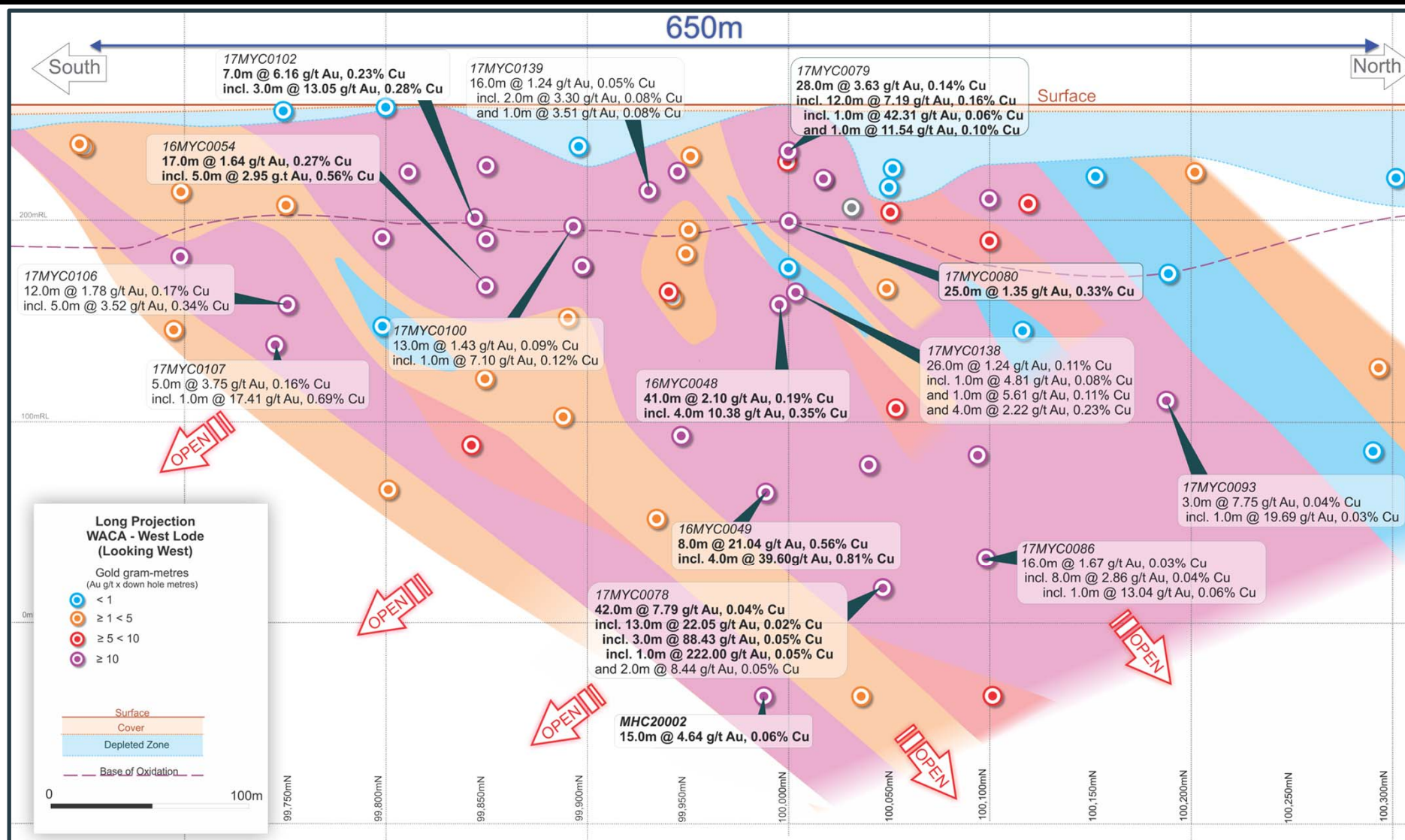
Surface Costean sample results

8.0 tonnes at 3.57 g/t gold

8.0 tonnes at 1.50 g/t gold

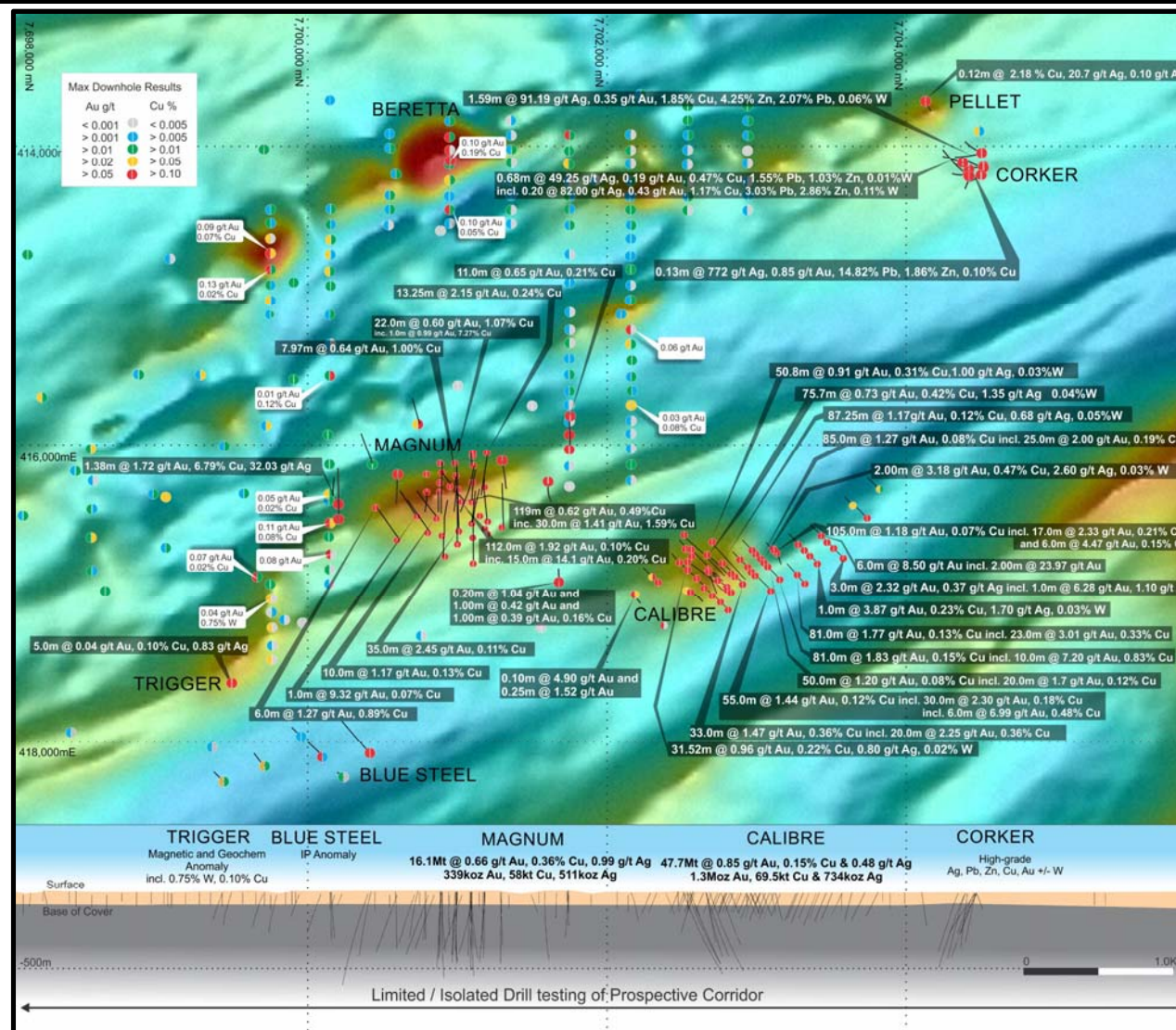


# NOTES: WACA DEPOSIT LONG PROJECTION





# NOTES: CITADEL PROJECT – RIO TINTO FARM-IN AND JOINT VENTURE MANGUM DOME AREA





# NOTES: COMPETENT PERSONS STATEMENT

## Competent Persons Statement – Exploration Results

The information in this report that relates to the Exploration Results is extracted from the following:

Reports entitled various relating to Citadel Project and North Telfer Project created between 7 September 2011 and 17 February 2018, including:

- Report entitled “Citadel Project – VTEM Electromagnetic Survey Extends Existing Magnum Target Area and Defines New Generation of High Priority Targets” created on 2 September 2011;
- Report entitled “Citadel Project – Corker and Magnum Drilling Update” created on 13 June 2012;
- Report entitled “Citadel Project – Corker and Magnum Second Drilling Update” created on 2 July 2012;
- Report entitled “Citadel Project Drilling Update - Exploration Upside Expanded” created on 3 August 2012;
- Report entitled “Citadel Project Phase 2 Drilling Programme – Twin Success” created on 13 December 2012;
- Report entitled “Calibre and Magnum Mineral Resources JORC 2012 Updates” created on 23 February 2015;
- Report entitled “Calibre Deposit Drilling Update (No 1)” created on 18 June 2015;
- Report entitled “Calibre Deposit Drilling Update (No 2)” created on 02 July 2015;
- Report entitled “Calibre Deposit Drilling Update (No 3)” created on 10 July 2015;
- Report entitled “Calibre Deposit Drilling Update (No 4)” created on 28 July 2015;
- Report entitled “Calibre 2015 Phase 2 RC Drilling Update No. 3” created on 17 November 2015;
- Report entitled “Calibre 2015 Drilling Phase 2 Results” created on 16 December 2015;
- Report entitled “Rio Tinto – Antipa Citadel Project Joint Venture” created on 9 October 2015;
- Report entitled “High Grade Gold Mineralisation at Minyari Dome” created on 8 February 2016;
- Report entitled “Citadel Project Exploration Update” created on 15 March 2016;
- Report entitled “Citadel Project Commencement of IP Survey” created on 24 March 2016;
- Report entitled “Minyari Drilling – May 2016 No.1” created on 2 May 2016;
- Report entitled “Minyari Phase – 2016 Phase 1 Drilling Programme Commences” created on 2 June 2016;
- Report entitled “Citadel Project IP Survey Identifies Multiple Chargeability Anomalies along 20km Calibre Trend” created on 24 June 2016;
- Report entitled “Minyari Reprocessed IP Survey Results” created on 5 July 2016;
- Report entitled “Minyari Drilling Update” created on 20 July 2016;
- Report entitled “Completion of Phase 1 Minyari Deposit RC Drilling Programme” created on 9 August 2016;
- Report entitled “Minyari Drilling Update No. 3” created on 17 August 2016;
- Report entitled “New Gold Opportunity – Tim’s Dome South” created on 22 September 2016;
- Report entitled “Minyari Drilling Update No. 4” created on 29 September 2016;
- Report entitled “Citadel Project Rio JV - Exploration Update RC Drilling Programme” created on 10 October 2016;
- Report entitled “Citadel Project Rio JV - RC Drilling Programme Commences” created on 28 October 2016;
- Report entitled “North Telfer Project – Phase 2 Exploration Programme Commences” created on 31 October 2016;
- Report entitled “North Telfer Project and Citadel Project – Phase 2 Exploration Programme Update” created on 16 November 2016;
- Report entitled “Antipa 100% Owned North Telfer Project Minyari Dome Drilling Update No. 1” created on 16 December 2016;
- Report entitled “Citadel Project – 2016 Phase 2 Drilling Programme Update No.2 – Drilling Identifies 4.8km Copper System at Rimfire” created on 16 January 2017;
- Report entitled “Minyari Dome and Citadel - Phase 2 Update” created on 9 February 2017;
- Report entitled “Minyari Dome 2017 Exploration Programme” created on 27 March 2017;
- Report entitled “Citadel Project Rio Funded 2017 Exploration Programme” created on 12 April 2017;
- Report entitled “Rio Tinto Elects to Proceed to Stage 2 of Citadel Farm-In” created on 12 April 2017;
- Report entitled “Minyari Dome 2017 Exploration Programme Commences” created on 13 April 2017;
- Report entitled “Citadel Phase 1 Exploration Programme Commences” created on 13 June 2017;
- Report entitled “Company Update June 2017” created on 13 June 2017;
- Report entitled “High –Grade Gold intersected at North Telfer Project” created on 21 June 2017;
- Report entitled “Drilling extends High-Grade Gold Mineralisation at WACA” created on 25 July 2017;
- Report entitled “Antipa Secure High –Grade Gold Chicken Ranch Deposit” created on 2 August 2017;
- Report entitled “High-Grade Gold Mineralisation Strike Extensions at Minyari Deposit” created on 4 August 2017;

Continued next page ....

# NOTES: COMPETENT PERSONS STATEMENT

## Continued from previous page:

- Report entitled “Minyari Dome Phase 1 Final Assay Results – Further Drilling Commencing September” created on 31 August 2017;
- Report entitled “Citadel Project Exploration Update” created on 2 October 2017;
- Report entitled “North Telfer and Paterson Projects - Exploration Update” created on 16 October 2017;
- Report entitled “Citadel Project Exploration Update” created on 8 November 2017;
- Report entitled “Minyari/WACA Deposits Maiden Mineral Resources” created on 16 November 2017;
- Report entitled “Calibre Deposit Mineral Resource Update” created on 17 November 2017;
- Report entitled “Minyari/WACA Air Core Drill Results” created on 5 December 2017;
- Report entitled “Antipa Consolidates Paterson Province Position” created on 21 December 2017;
- Report entitled “Minyari Dome Air Core Drilling Results” created on 29 January 2018;
- Report entitled “Tim’s Dome Air Core Drilling Results” created on 31 January 2018;
- Report entitled “Citadel Project 2017 Exploration Update” created on 7 February 2018;
- Report entitled “RIU Explorer’s Conference Presentation” created on 22 February 2018;
- Report entitled “Citadel Project 2018 Exploration Programme” created on 27 March 2018;
- Report entitled “Antipa to Commence Major Exploration Programme” created on 1 June 2018;
- Report entitled “Major Exploration Programme Commences” created on 25 June 2018;
- Report entitled “2018 Exploration Programme Update” created on 16 July 2018; and
- Report entitled “Minyari Dome – Initial Drill Results” created on 1 August 2018.

All of which are available to view on [www.antipaminerals.com.au](http://www.antipaminerals.com.au) and [www.asx.com.au](http://www.asx.com.au). The Company confirms that it is not aware of any new information or data that materially affects the information included in the original market announcements.

The Company confirms that the form and context in which the Competent Person’s findings are presented have not been materially modified from the original market announcements.

## Competent Persons Statement – Mineral Resource Estimations for the Minyari-WACA Deposits, Calibre Deposit and Magnum Deposit

The information in this report that relates to the estimation and reporting of the Minyari-WACA deposits Mineral Resources is extracted from the report entitled “Minyari/WACA Deposits Maiden Mineral Resources” created on 16 February 2018, the Calibre deposit Mineral Resource information is extracted from the report entitled “Calibre Deposit Mineral Resource Update” created on 17 February 2018 and the Magnum deposit Mineral Resource information is extracted from the report entitled “Calibre and Magnum Deposit Mineral Resource JORC 2012 Updates” created on 23 February 2015, both of which are available to view on [www.antipaminerals.com.au](http://www.antipaminerals.com.au) and [www.asx.com.au](http://www.asx.com.au). The Company confirms that it is not aware of any new information or data that materially affects the information included in the original market announcements. The Company confirms that the form and context in which the Competent Person’s findings are presented have not been materially modified from the original market announcements.

## Gold Metal Equivalent Information

- Magnum Mineral Resource AuEquiv cut-off grade – Gold Equivalent (AuEquiv) details of material factors and metal equivalent formula are reported in “Calibre & Magnum Mineral Resources JORC 2012 Updates” created on 23 February 2015 (<http://antipaminerals.com.au/wp-content/uploads/2018/02/2015-02-23.pdf>).
- Calibre Mineral Resource AuEquiv cut-off grade – Gold Equivalent (AuEquiv) details of material factors and metal equivalent formula are reported in “Calibre Deposit Mineral Resource Update” created on 17 February 2018 (<http://antipaminerals.com.au/wp-content/uploads/2017/12/Calibre-Deposit-Mineral-Resource-Update.pdf>).



ASX Code : AZY

[www.antipaminerals.com.au](http://www.antipaminerals.com.au)