

COMPLETION OF \$5.1 MILLION PLACEMENT

Antipa Minerals Ltd (ASX: AZY) (“**Antipa**” or the “**Company**”) is pleased to announce it has completed the issuance of 268,825,900 million new shares at a price of \$0.019 per share, raising \$5.1 million in new capital (“**Placement**”).

The Placement was conducted pursuant to the Company’s existing 15% placement capacity under ASX Listing Rule 7.1.

Hartleys Limited and Discovery Capital Partners acted as Joint Lead Managers to the Placement.

For further information, please visit www.antipaminerals.com.au or contact:

Roger Mason
Managing Director
Antipa Minerals Ltd
+61 (0)8 9481 1103

Stephen Power
Executive Chairman
Antipa Minerals Ltd
+61 (0)8 9481 1103

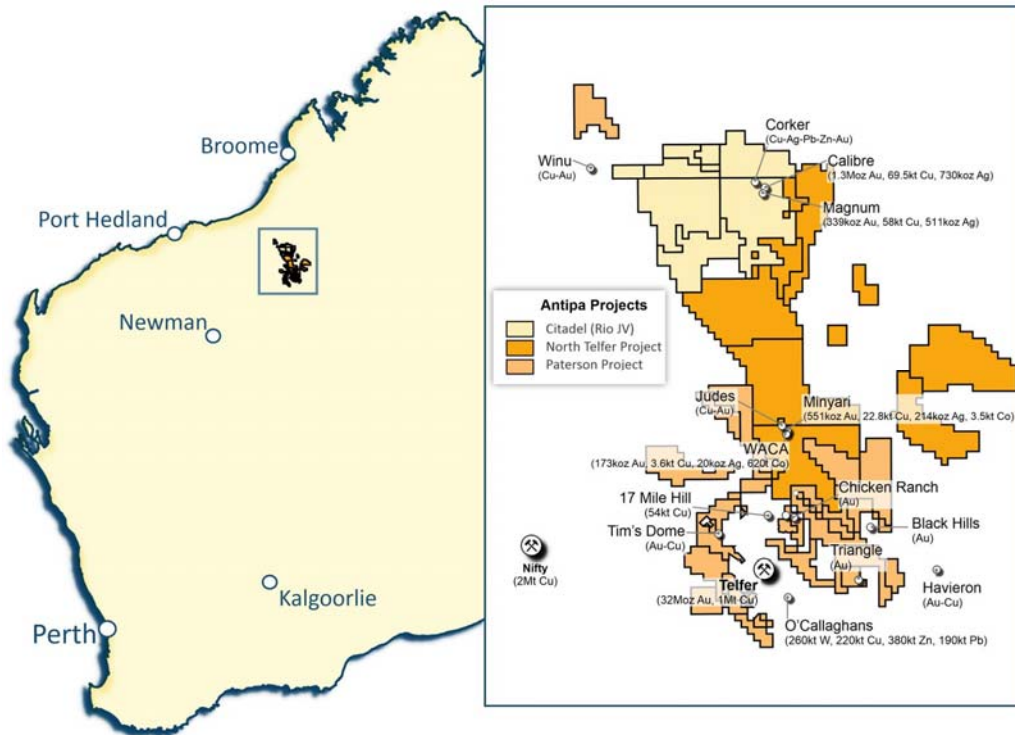
Luke Forrestal
Associate Director
Media & Capital Partners
+61 (0)411 479 144

About Antipa Minerals: Antipa is a mineral exploration company focused on the Paterson Province in north-west Western Australia, home to Newcrest Mining’s world-class Telfer gold mine, Rio Tinto’s recent Winu copper discovery and other significant mineral deposits. Having first entered the Paterson in 2011 when it was a less sought-after exploration address, the Company has used its early mover advantage to build an enviable tenement holding of approximately 5,000km², including the 1,330km² Citadel Project that is subject to a Farm-in and Joint Venture Agreement with Rio Tinto. Under the terms of the Farm-in and Joint Venture Agreement, Rio Tinto can fund up to \$60 million of exploration expenditure to earn up to a 75% interest in Antipa’s Citadel Project. Unlike certain parts of the Paterson where cover can extend to kilometres, making for difficult exploration, the Company’s tenements feature relatively shallow cover: approximately 80% are under less than 80 metres. The Citadel Project lies within 5km of the Winu discovery and contains a Mineral Resource of 1.64 million ounces of gold and 128,000 tonnes of copper spread across two deposits, Calibre and Magnum. The Company has also established a Mineral Resource on its 100%-owned tenements, known as the North Telfer and Paterson Projects, with the Minyari-WACA deposits containing 723,000 ounces of gold and 26,000 tonnes of copper. Extensive drilling is planned for 2019 across Antipa’s Paterson tenements as the company pursues a dual strategy of targeting tier-one greenfields discoveries and growing its existing resources through brownfields exploration.

References to Rio Tinto: All references to “Rio Tinto” or “Rio” in this document are a reference to Rio Tinto Exploration Pty Limited, a wholly owned subsidiary of Rio Tinto Limited.

Not an offer to sell, etc: This document is for release in Australia and does not constitute an offer to sell, or a solicitation of an offer to buy, any securities in any jurisdiction in which such offer, solicitation or sale would be unlawful. In particular, any securities discussed in this announcement have not been, and will not be, registered under the US Securities Act of 1933 or any US state securities laws and may not be offered or sold within the United States except in transactions exempt from, or not subject to, the registration requirements of the US Securities Act and applicable US state securities laws.

Forward-Looking Statements: This document may include forward-looking statements. Forward-looking statements include, but are not limited to, statements concerning the Company planned exploration programme and other statements that are not historical facts. When used in this document, the words such as “could,” “plan,” “estimate,” “expect,” “intend,” “may,” “potential,” “should,” and similar expressions are forward-looking statements. Although the Company believes that its expectations reflected in these forward-looking statements are reasonable, such statements involve risks and uncertainties and no assurance can be given that actual results will be consistent with these forward-looking statements.



Competent Persons Statement – Exploration Results: The information in this document that relates to Exploration Results is based on and fairly represents information and supporting documentation compiled by Mr Roger Mason, a Competent Person who is a Member of The Australasian Institute of Mining and Metallurgy. Mr Mason is a full-time employee of the Company. Mr Mason is the Managing Director of Antipa Minerals Limited, is a substantial shareholder of the Company and is an option holder of the Company. Mr Mason has sufficient experience relevant to the style of mineralisation and type of deposit under consideration and to the activity being undertaking to qualify as a Competent Person as defined in the 2012 Edition of the 'Australasian Code for Reporting of Exploration Results, Mineral Resources and Ore Reserves'. The Company confirms that the form and context in which the Competent Person's findings are presented have not been materially modified from the original market announcements.

Competent Persons Statement – Mineral Resource Estimations for the Minyari-WACA Deposits, Calibre Deposit and Magnum Deposit: The information in this document that relates to the estimation and reporting of the Minyari-WACA deposits Mineral Resources is extracted from the report entitled "Minyari/WACA Deposits Maiden Mineral Resources" created on 16 November 2017, the Calibre deposit Mineral Resource information is extracted from the report entitled "Calibre Deposit Mineral Resource Update" created on 17 November 2017 and the Magnum deposit Mineral Resource information is extracted from the report entitled "Calibre and Magnum Deposit Mineral Resource JORC 2012 Updates" created on 23 February 2015, all of which are available to view on www.antipaminerals.com.au and www.asx.com.au. The Company confirms that it is not aware of any new information or data that materially affects the information included in the original market announcements. The Company confirms that the form and context in which the Competent Person's findings are presented have not been materially modified from the original market announcements.

Gold Metal Equivalent Information - Calibre Mineral Resource AuEquiv cut-off grade: Gold Equivalent (AuEquiv) details of material factors and metal equivalent formula are reported in "Calibre Deposit Mineral Resource Update" created on 16 November 2017 which is available to view on www.antipaminerals.com.au and www.asx.com.au.

Gold Metal Equivalent Information - Magnum Mineral Resource AuEquiv cut-off grade: Gold Equivalent (AuEquiv) details of material factors and metal equivalent formula are reported in "Citadel Project - Calibre and Magnum Deposit Mineral Resource JORC 2012 Updates" created on 23 February 2015 which is available to view on www.antipaminerals.com.au and www.asx.com.au

