

RESULTS OF GENERAL MEETING

Antipa Minerals Limited (ASX:AZY)(**Company**) advises that its General Meeting was held today, 10 August 2021. All resolutions put to the meeting were passed on a Poll. In accordance with Listing Rule 3.13.2 and section 251AA of the Corporations Act, the Company advises that details of the Poll results and the proxies received in respect of each resolution are attached.

Release authorised by
Stephen Power
Executive Chairman

For further information, please visit www.antipaminerals.com.au or contact:

Roger Mason
Managing Director
Antipa Minerals Ltd
+61 (0)8 9481 1103

Stephen Power
Executive Chairman
Antipa Minerals Ltd
+61 (0)8 9481 1103

Angela East
Associate Director
Media & Capital Partners
+61 (0)428 432 025

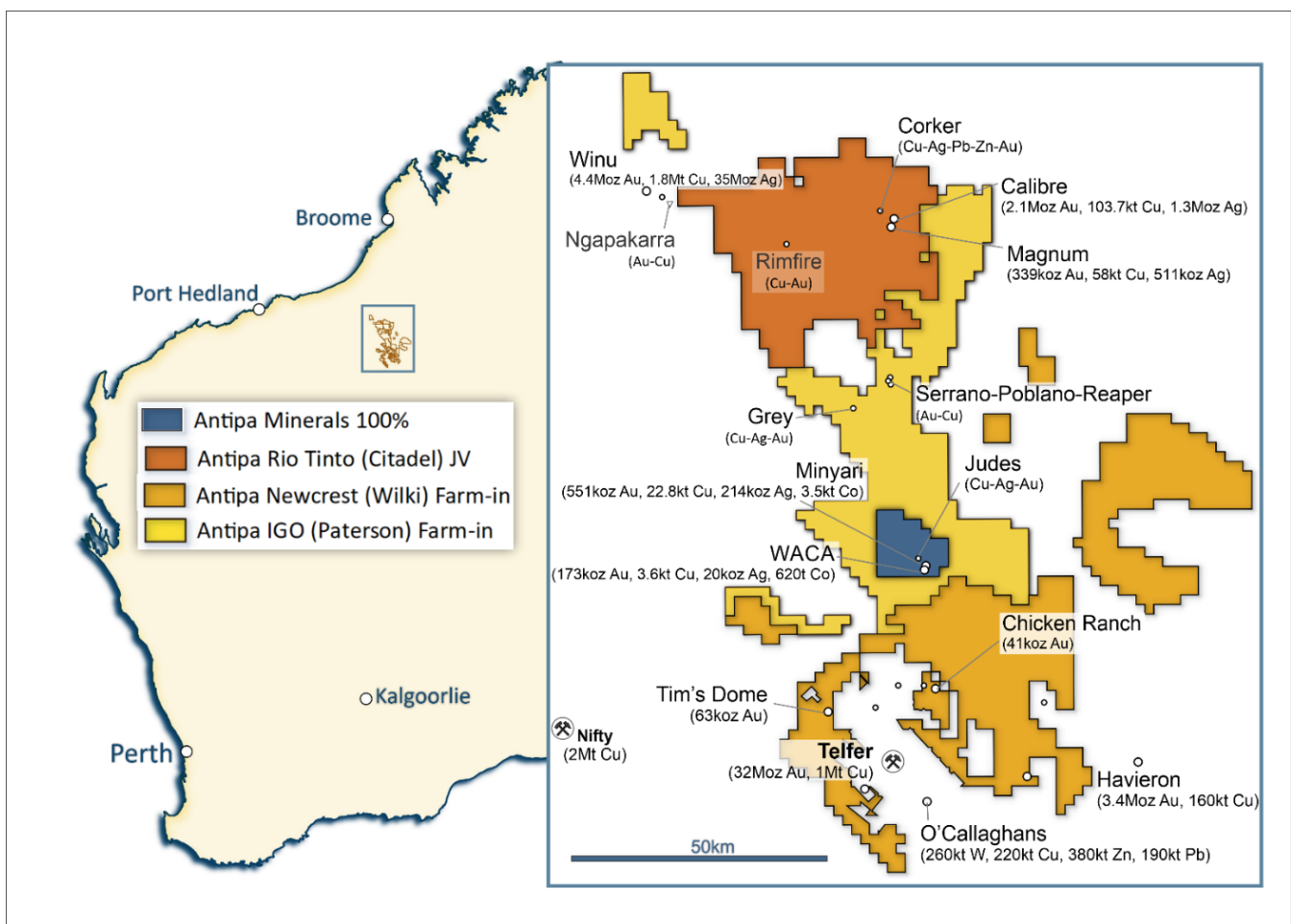
ANTIPA MINERALS LTD
General Meeting
Tuesday, 10 August 2021
Results of Meeting

The following information is provided in accordance with section 251AA(2) of the Corporations Act 2001 (Cth) and ASX Listing Rule 3.13.2.

Resolution details		Instructions given to validly appointed proxies (as at proxy close)				Number of votes cast on the poll (where applicable)			Resolution Result
Resolution	Resolution Type	For	Against	Proxy's Discretion	Abstain	For	Against	Abstain*	Carried / Not Carried
1 Ratification of Prior Issue of Shares – Institutional Placement - Listing Rule 7.1	Ordinary	358,320,440 97.25%	3,216,693 0.87%	6,928,396 1.88%	34,782,479	365,608,836 99.13%	3,216,693 0.87%	34,782,479	Carried
2 Ratification of Prior Issue of Shares – Institutional Placement - Listing Rule 7.1A	Ordinary	358,320,440 97.25%	3,216,693 0.87%	6,928,396 1.88%	34,782,479	365,608,836 99.13%	3,216,693 0.87%	34,782,479	Carried
3 Ratification of Prior Issue of Shares – Newcrest Placement 1 - Listing Rule 7.1	Ordinary	422,624,092 97.67%	3,147,893 0.73%	6,928,396 1.60%	650,000	429,912,488 99.27%	3,147,893 0.73%	650,000	Carried
4 Ratification of Prior Issue of Shares – CDF Placement - Listing Rule 7.1	Ordinary	422,475,292 97.66%	3,216,693 0.74%	6,928,396 1.60%	730,000	429,763,688 99.26%	3,216,693 0.74%	730,000	Carried
5 Ratification of Prior Issue of Shares – Newcrest Placement 2 - Listing Rule 7.1	Ordinary	422,524,092 97.65%	3,247,893 0.75%	6,928,396 1.60%	650,000	429,812,488 99.25%	3,247,893 0.75%	650,000	Carried

* Votes cast by a person who abstains on an item are not counted in calculating the required majority on a poll.

About Antipa Minerals: Antipa is a mineral exploration company focused on the Paterson Province in north-west Western Australia, home to Newcrest Mining’s world-class Telfer gold-copper mine, Rio Tinto’s Winu copper-gold deposit, Greatland Gold-Newcrest’s recent Havieron gold-copper discovery and other significant mineral deposits. Having first entered the Paterson in 2011 when it was a less sought-after exploration address, the Company has used its early mover advantage to build an enviable tenement holding of ~5,200km², including the ~1,300km² Citadel Joint Venture Project with Rio Tinto (who currently holds a 65% joint venture interest), the ~2,200km² Wilki Project that is subject to a \$60 million Farm-in and Joint Venture Agreement with Newcrest (who is yet to earn a joint venture interest) and the ~1,500km² Paterson Project that is subject to a \$30 million Farm-in and Joint Venture Agreement with IGO (who is yet to earn a joint venture interest). The Citadel Project lies within 5km of the Winu discovery and contains a Mineral Resource of 1.64 million ounces of gold and 128,000 tonnes of copper from two deposits, Calibre and Magnum. Antipa retains 144km² of 100%-owned Minyari Dome Project tenements which contains an established Mineral Resource, with the Minyari and WACA deposits containing 723,000 ounces of gold and 26,000 tonnes of copper plus other deposits and high quality exploration targets. Unlike certain parts of the Paterson where the post mineralisation (younger) cover can be kilometres thick, making for difficult exploration, the Company’s combined ~5,200km² tenement portfolio features relatively shallow cover; approximately 80% being under less than 80 metres of cover. Extensive drilling and geophysical surveys are planned for 2021 across Antipa’s combined Paterson tenement portfolio as the company pursues a dual strategy of targeting tier-one greenfields discoveries and growing its existing resources through brownfields exploration.



Forward-Looking Statements: This document may include forward-looking statements. Forward-looking statements include, but are not limited to, statements concerning Antipa Mineral Ltd’s planned exploration programme and other statements that are not historical facts. When used in this document, the words such as "could," "plan," "estimate," "expect," "intend," "may," "potential," "should," and similar expressions are forward-looking statements. Although the Company believes that its expectations reflected in these forward-looking statements are reasonable, such statements involve risks and uncertainties and no assurance can be given that actual results will be consistent with these forward-looking statements.

Competent Persons Statement – Exploration Results: The information in this document that relates to previously reported Exploration Results is based on and fairly represents information and supporting documentation compiled by Mr Roger Mason, a Competent Person who is a Member of The Australasian Institute of Mining and Metallurgy. Mr Mason is a full-time employee of the Company. Mr Mason is the Managing Director of the Company, is a substantial shareholder of the Company and is an option holder of the Company. Mr Mason has sufficient experience relevant to the style of mineralisation and type of deposit under consideration and to the activity being undertaken to qualify as a Competent Person as defined in the 2012 Edition of the 'Australasian Code for Reporting of Exploration Results, Mineral Resources and Ore Reserves'. The Company confirms that the form and context in which the Competent Person's findings are presented have not been materially modified from the original market announcements, all of which are available to view on www.antipaminerals.com.au and www.asx.com.au. The Company also confirms that it is not aware of any new information or data that materially affects the information included in the original market announcements. Mr Mason, whose details are set out above, was the Competent Person in respect of the Exploration Results in these original market announcements.

Competent Persons Statement – Mineral Resource Estimations for the Minyari-WACA Deposits, Calibre Deposit, Tim's Dome and Chicken Ranch Deposits, and Magnum Deposit: The information in this document that relates to the estimation and reporting of the Minyari-WACA deposits Mineral Resources is extracted from the report entitled "*Minyari/WACA Deposits Maiden Mineral Resources*" created on 16 November 2017 with Competent Persons Kahan Cervoj and Susan Havlin, the Calibre deposit Mineral Resource is extracted from the report entitled "*Calibre Gold Resource Increases 62% to 2.1 Million Ounces*" created on 17 May 2021 with Competent Person Ian Glacken, the Tim's Dome and Chicken Ranch deposits Mineral Resources is extracted from the report entitled "*Chicken Ranch and Tims Dome Maiden Mineral Resources*" created on 13 May 2019 with Competent Person Shaun Searle, and the Magnum deposit Mineral Resource information is extracted from the report entitled "*Calibre and Magnum Deposit Mineral Resource JORC 2012 Updates*" created on 23 February 2015 with Competent Person Patrick Adams, all of which are available to view on www.antipaminerals.com.au and www.asx.com.au. The Company confirms that it is not aware of any new information or data that materially affects the information included in the original market announcements and that all material assumptions and technical parameters underpinning the estimates in the relevant original market announcements continue to apply and have not materially changed. The Company confirms that the form and context in which the Competent Person's findings are presented have not been materially modified from the original market announcements.

Gold Metal Equivalent Information - Calibre Mineral Resource Gold Equivalent cut-off grade: Gold Equivalent (Aueq) details of material factors and metal equivalent formula are reported in "*Calibre Gold Resource Increases 62% to 2.1 Million Ounces*" created on 17 May 2021 which is available to view on www.antipaminerals.com.au and www.asx.com.au.

Gold Metal Equivalent Information - Magnum Mineral Resource Gold Equivalent cut-off grade: Gold Equivalent (Aueq) details of material factors and metal equivalent formula are reported in "*Citadel Project - Calibre and Magnum Deposit Mineral Resource JORC 2012 Updates*" created on 23 February 2015 which is available to view on www.antipaminerals.com.au and www.asx.com.au.

Mineral Resource Estimates

Minyari Dome Project (100% Antipa)

Deposit and Gold Cut-off Grade*	Resource Category	Tonnes (Mt)	Gold Grade (g/t)	Copper Grade (%)	Silver Grade (g/t)	Cobalt (ppm)	Gold (oz)	Copper (t)	Silver (oz)	Cobalt (t)
Minyari 0.5 Au	Indicated	3.2	1.9	0.3	0.7	590	192,610	9,600	75,660	1,860
Minyari 0.5 Au	Inferred	0.7	1.7	0.24	0.6	340	36,260	1,560	13,510	220
Minyari 0.5 Au	Sub-Total	3.8	1.9	0.29	0.7	550	228,870	11,160	89,170	2,080
Minyari 1.7 Au	Indicated	.2	2.6	0.29	0.9	430	18,740	650	6,800	100
Minyari 1.7 Au	Inferred	3.7	2.6	0.3	1.0	370	303,000	10,950	117,550	1,360
Minyari 1.7 Au	Sub-Total	3.9	2.6	0.3	1.0	380	321,740	11,600	124,350	1,460
Minyari	Total	7.7	2.2	0.3	0.9	460	550,610	22,760	213,520	3,540
WACA 0.5 Au	Inferred	2.8	1.4	0.11	0.2	180	121,950	3,120	15,920	500
WACA 1.7 Au	Inferred	0.5	2.9	0.09	0.2	230	50,780	510	3,850	120
WACA	Total	3.3	1.6	0.11	0.2	190	172,730	3,630	19,770	620
Minyari + WACA Deposits	Grand Total	11.0	2.0	0.24	0.7	380	723,340	26,390	233,290	4,160

*0.5 Au = Using a 0.5 g/t gold cut-off grade above the 50mRL (NB: potential "Open Cut" cut-off grade) and *1.7 Au = Using a 1.7 g/t gold cut-off grade below the 50mRL (NB: potential "Underground" cut-off grade)

Wilki Project (Newcrest Farm-in)

Deposit and Gold Cut-off Grade**	Resource Category	Tonnes (Mt)	Gold Grade (g/t)	Copper Grade (%)	Silver Grade (g/t)	Cobalt (ppm)	Gold (oz)	Copper (t)	Silver (oz)	Cobalt (t)
Chicken Ranch Area 0.5 Au	Inferred	0.8	1.6	-	-	-	40,300	-	-	-
Tim's Dome 0.5 Au	Inferred	1.8	1.1	-	-	-	63,200	-	-	-
Chicken Ranch Area + Tim's Dome	Total	2.4	1.3	-	-	-	103,500	-	-	-

**0.5 Au = Using a 0.5 g/t gold cut-off grade above the 50mRL (NB: potential "Open Cut" cut-off grade)

Note: Wilki Project Mineral Resources are tabled on a 100% basis, with Antipa's current joint venture interest being 100%

Citadel Project (Rio Tinto JV)

Deposit and Gold Cut-off Grade***	Resource Category	Tonnes (Mt)	Gold Equiv (g/t)	Gold Grade (g/t)	Copper Grade (%)	Silver Grade (g/t)	Gold Equiv (Moz)	Gold (Moz)	Copper (t)	Silver (Moz)
Calibre 0.5 Au Equiv	Inferred	92	0.92	0.72	0.11	0.46	2.7	2.1	104,000	1.3
Magnum 0.5 Au Equiv	Inferred	16	-	0.70	0.37	1.00	-	0.34	58,000	0.5
Calibre + Magnum Deposits	Total	108	-	0.72	0.15	0.54	2.7	2.4	162,000	1.8

***0.5 AuEquiv = Refer to details provided by the Notes section

Note: Citadel Project Mineral Resources are tabled on a 100% basis, with Antipa's current joint venture interest being 35%