

CHANGES TO BOARD OF DIRECTORS

Antipa Minerals Limited (ASX: **AZY**) (**Antipa** or the **Company**) advises that following a period of transformative growth for Antipa over the past 18 months and to ensure the Company has the necessary Executive capabilities in place for the next stage of growth, Antipa intends to make the following changes to the Company's Board of Directors. Effective 16 September 2021, Mr Mark Rodda will assume the role of Executive Director – Commercial and Legal and Mr Stephen Power will assume the role of Non-executive Chairman.

The continued progress of Antipa's three Farm-in/Joint Venture projects with high-quality partners Rio Tinto, Newcrest and IGO, along with the development of Antipa's 100% owned Minyari Dome Project, has led to increasing executive requirements. The Company is pleased to be able to draw further on Mr Rodda's vast experience to meet this requirement.

Mr Rodda has been a Non-executive Director of Antipa for the last 10 years and has been an integral part of the Company's development in that time. Mr Rodda has been a lawyer and corporate consultant for over 24 years and has considerable practical experience in the management of local and international mergers and acquisitions, divestments, exploration and project joint ventures, strategic alliances, corporate and project financing transactions and corporate restructuring initiatives. Mr Rodda currently manages Napier Capital Pty Ltd, a specialist corporate advisory business established in 2008 to assist clients with transactional or strategic projects. Prior to this, Mr Rodda held the position of General Counsel and Corporate Secretary for LionOre Mining International Ltd, a company with operations in Australia and Africa and listings on the TSX, LSE and ASX, which was acquired by Norilsk Nickel for in excess of US\$6.3 billion.

Antipa's Managing Director, Roger Mason, said in relation to the changes: *"We are very pleased Mark is joining the Board of Antipa in an Executive capacity. Mark has an intimate understanding of the Company and its assets and his practical experience and knowledge will be invaluable as we enter the next exciting stage of growth for the Company."*

Release authorised by
Stephen Power
Non-Executive Chairman

For further information, please visit www.antipaminerals.com.au or contact:

Roger Mason
Managing Director
Antipa Minerals Ltd
+61 (0)8 9481 1103

Stephen Power
Non-Executive Chairman
Antipa Minerals Ltd
+61 (0)8 9481 1103

Angela East
Associate Director
Media & Capital Partners
+61 (0)428 432 025

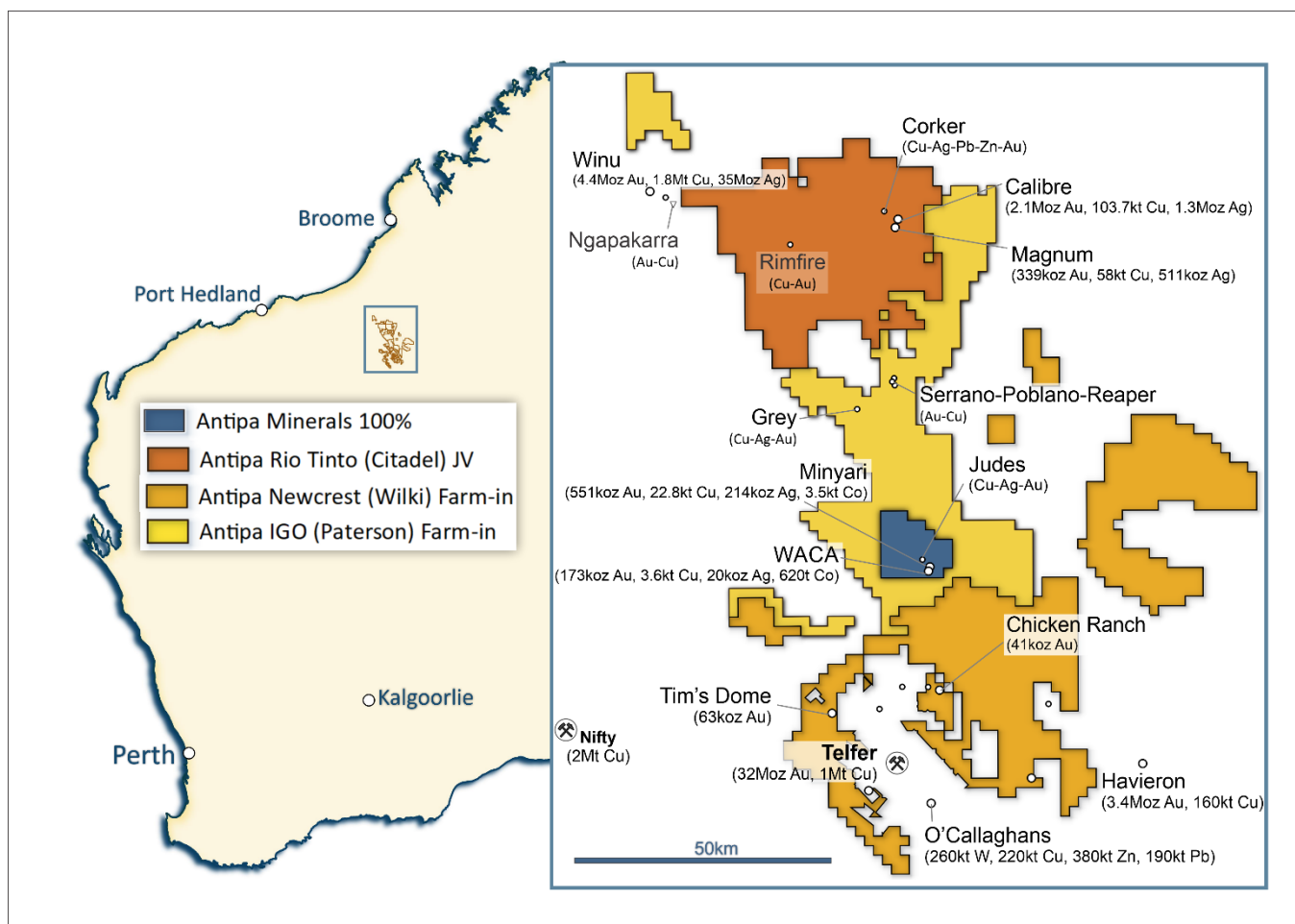
ATTACHMENT 1: KEY TERMS OF MR RODDA'S EMPLOYMENT CONTRACT

Pursuant to ASX Listing Rule 3.16.4 the Company advises the material terms of Mr Rodda's Employment Agreement for the position of Executive Director – Commercial and Legal (**Employment Agreement**).

The key terms of the Services Agreement are:

<p>Term</p>	<p>Mr Rodda's appointment as Executive Director – Commercial and Legal is effective from 16 September 2021.</p> <p>The term of his employment will continue until terminated in accordance with the Employment Agreement.</p>
<p>Remuneration</p>	<ul style="list-style-type: none"> • Base Salary: \$265,000 per annum (plus statutory superannuation, currently 10%) (Base Salary). • Employee Share Schemes: Participation in employee based share or option schemes or other profit distribution arrangements directed at all employees of the Company. Refer to Schedule 3 of the Company's notice of annual general meeting announced on the ASX market announcements platform on 18 October 2019 for a summary of the material terms of the Company's employee securities incentive plan. <p>Mr Rodda's remuneration will be reviewed by 1 July 2022 and annually thereafter.</p>
<p>Termination</p>	<ul style="list-style-type: none"> • <i>Termination by notice</i>: Either party may terminate the Agreement by 3 months' notice in writing. A payment in lieu of notice may be made at the Company's discretion. • <i>Summary termination without notice</i>: Customary summary termination events apply in favour of the Company in circumstances including misconduct or breach by Mr Rodda. • <i>Severance payment</i>: Mr Rodda will be entitled to a severance payment of 6 months' Base Salary in the event of the occurrence of certain prescribed events that lead to Mr Rodda terminating, or the Company electing to terminate, the Employment Agreement. • <i>No unlawful payments</i>: To the extent that the Corporations Act or the ASX Listing Rules prohibit or limit any payment required under the Employment Agreement, the Company shall not be bound to make such payment.

About Antipa Minerals: Antipa is a mineral exploration company focused on the Paterson Province in north-west Western Australia, home to Newcrest Mining’s world-class Telfer gold-copper mine, Rio Tinto’s Winu copper-gold deposit, Greatland Gold-Newcrest’s recent Havieron gold-copper discovery and other significant mineral deposits. Having first entered the Paterson in 2011 when it was a less sought-after exploration address, the Company has used its early mover advantage to build an enviable tenement holding of ~5,200km², including the ~1,300km² Citadel Joint Venture Project with Rio Tinto (who currently holds a 65% joint venture interest), the ~2,200km² Wilki Project that is subject to a \$60 million Farm-in and Joint Venture Agreement with Newcrest (who is yet to earn a joint venture interest) and the ~1,500km² Paterson Project that is subject to a \$30 million Farm-in and Joint Venture Agreement with IGO (who is yet to earn a joint venture interest). The Citadel Project lies within 5km of the Winu deposit and contains a Mineral Resource of 2.4 million ounces of gold and 162,000 tonnes of copper from two deposits, Calibre and Magnum. Antipa retains 144km² of 100%-owned Minyari Dome Project tenements which contains an established Mineral Resource, with the Minyari and WACA deposits containing 723,000 ounces of gold and 26,000 tonnes of copper plus other deposits and high quality exploration targets. Unlike certain parts of the Paterson where the post mineralisation (younger) cover can be kilometres thick, making for difficult exploration, the Company’s combined 5,200km² tenement portfolio features relatively shallow cover; approximately 80% being under less than 80 metres of cover. Extensive drilling and geophysical surveys are planned for 2021 across Antipa’s combined Paterson tenement portfolio as the company pursues a dual strategy of targeting tier-one greenfields discoveries and growing its existing resources through brownfields exploration.



Forward-Looking Statements: This document may include forward-looking statements. Forward-looking statements include, but are not limited to, statements concerning Antipa Mineral Ltd’s planned exploration programme and other statements that are not historical facts. When used in this document, the words such as "could," "plan," "estimate," "expect," "intend," "may," "potential," "should," and similar expressions are forward-looking statements. Although Antipa Minerals Ltd believes that its expectations reflected in these forward-looking statements are reasonable, such statements involve risks and uncertainties and no assurance can be given that actual results will be consistent with these forward-looking statements.

Competent Persons Statement – Mineral Resource Estimations for the Minyari-WACA Deposits, Calibre Deposit, Tim’s Dome and Chicken Ranch Deposits, and Magnum Deposit: The information in this document that relates to the estimation and reporting of the Minyari-WACA deposits Mineral Resources is extracted from the report entitled “*Minyari/WACA Deposits Maiden Mineral Resources*” created on 16 November 2017 with Competent Persons Kahan Cervoj and Susan Havlin, the Calibre deposit Mineral Resource is extracted from the report entitled “*Calibre Gold Resource Increases 62% to 2.1 Million Ounces*” created on 17 May 2021 with Competent Person Ian Glacken, the Tim’s Dome and Chicken Ranch deposits Mineral Resources is extracted from the report entitled “*Chicken Ranch and Tims Dome Maiden Mineral Resources*” created on 13 May 2019 with Competent Person Shaun Searle, and the Magnum deposit Mineral Resource information is extracted from the report entitled “*Calibre and Magnum Deposit Mineral Resource JORC 2012 Updates*” created on 23 February 2015 with Competent Person Patrick Adams, all of which are available to view on www.antipaminerals.com.au and www.asx.com.au. The Company confirms that it is not aware of any new information or data that materially affects the information included in the original market announcements and that all material assumptions and technical parameters underpinning the estimates in the relevant original market announcements continue to apply and have not materially changed. The Company confirms that the form and context in which the Competent Person’s findings are presented have not been materially modified from the original market announcements.

Gold Metal Equivalent Information - Calibre Mineral Resource Gold Equivalent cut-off grade: Gold Equivalent (Aueq) details of material factors and metal equivalent formula are reported in “*Calibre Gold Resource Increases 62% to 2.1 Million Ounces*” created on 17 May 2021 which is available to view on www.antipaminerals.com.au and www.asx.com.au.

Gold Metal Equivalent Information - Magnum Mineral Resource Gold Equivalent cut-off grade: Gold Equivalent (Aueq) details of material factors and metal equivalent formula are reported in “*Citadel Project - Calibre and Magnum Deposit Mineral Resource JORC 2012 Updates*” created on 23 February 2015 which is available to view on www.antipaminerals.com.au and www.asx.com.au.

Mineral Resource Estimates

Minyari Dome Project (100% Antipa)

Deposit and Gold Cut-off Grade*	Resource Category	Tonnes (Mt)	Gold Grade (g/t)	Copper Grade (%)	Silver Grade (g/t)	Cobalt (ppm)	Gold (oz)	Copper (t)	Silver (oz)	Cobalt (t)
Minyari 0.5 Au	Indicated	3.2	1.9	0.3	0.7	590	192,610	9,600	75,660	1,860
Minyari 0.5 Au	Inferred	0.7	1.7	0.24	0.6	340	36,260	1,560	13,510	220
Minyari 0.5 Au	Sub-Total	3.8	1.9	0.29	0.7	550	228,870	11,160	89,170	2,080
Minyari 1.7 Au	Indicated	.2	2.6	0.29	0.9	430	18,740	650	6,800	100
Minyari 1.7 Au	Inferred	3.7	2.6	0.3	1.0	370	303,000	10,950	117,550	1,360
Minyari 1.7 Au	Sub-Total	3.9	2.6	0.3	1.0	380	321,740	11,600	124,350	1,460
Minyari	Total	7.7	2.2	0.3	0.9	460	550,610	22,760	213,520	3,540
WACA 0.5 Au	Inferred	2.8	1.4	0.11	0.2	180	121,950	3,120	15,920	500
WACA 1.7 Au	Inferred	0.5	2.9	0.09	0.2	230	50,780	510	3,850	120
WACA	Total	3.3	1.6	0.11	0.2	190	172,730	3,630	19,770	620
Minyari + WACA Deposits	Grand Total	11.0	2.0	0.24	0.7	380	723,340	26,390	233,290	4,160

*0.5 Au = Using a 0.5 g/t gold cut-off grade above the 50mRL (NB: potential "Open Cut" cut-off grade) and *1.7 Au = Using a 1.7 g/t gold cut-off grade below the 50mRL (NB: potential "Underground" cut-off grade)

Wilki Project (Newcrest Farm-in)

Deposit and Gold Cut-off Grade**	Resource Category	Tonnes (Mt)	Gold Grade (g/t)	Copper Grade (%)	Silver Grade (g/t)	Cobalt (ppm)	Gold (oz)	Copper (t)	Silver (oz)	Cobalt (t)
Chicken Ranch Area 0.5 Au	Inferred	0.8	1.6	-	-	-	40,300	-	-	-
Tim's Dome 0.5 Au	Inferred	1.8	1.1	-	-	-	63,200	-	-	-
Chicken Ranch Area + Tim's Dome	Total	2.4	1.3	-	-	-	103,500	-	-	-

**0.5 Au = Using a 0.5 g/t gold cut-off grade above the 50mRL (NB: potential "Open Cut" cut-off grade)

Note: Wilki Project Mineral Resources are tabled on a 100% basis, with Antipa's current joint venture interest being 100%

Citadel Project (Rio Tinto JV)

Deposit and Gold Cut-off Grade***	Resource Category	Tonnes (Mt)	Gold Equiv (g/t)	Gold Grade (g/t)	Copper Grade (%)	Silver Grade (g/t)	Gold Equiv (Moz)	Gold (Moz)	Copper (t)	Silver (Moz)
Calibre 0.5 Au Equiv	Inferred	92	0.92	0.72	0.11	0.46	2.7	2.1	104,000	1.3
Magnum 0.5 Au Equiv	Inferred	16	-	0.70	0.37	1.00	-	0.34	58,000	0.5
Calibre + Magnum Deposits	Total	108	-	0.72	0.15	0.54	2.7	2.4	162,000	1.8

***0.5 AuEquiv = Refer to details provided by the Notes section

Note: Citadel Project Mineral Resources are tabled on a 100% basis, with Antipa's current joint venture interest being 35%